

**STRENGTH
EFFICIENCY
VERSATILITY**



FRONT LOADERS

L SERIES

Landini®

Passion for Innovation.





LANDINI FRONT LOADERS: DESIGNED TO SURPRISE

A long-standing, internationally recognized tradition of quality can only be built through a strong passion for innovation. Relying on its wealth of experience with agricultural machinery, Landini has developed a whole new range of front-end loaders that will surprise you with their strength, performance and versatility.

Designed to be fully compatible with the entire range of Landini tractors – from the 47-hp Mistral 2 to the 240-hp 7 Series – this new lineup of front loaders includes five ranges that are built for rugged, versatile performance and offer the perfect match for a variety of agricultural and forestry applications as well as for municipal tasks like maintenance of green spaces and snow removal.

The Landini front-end loaders provide optimum performance in all working situations: excellent levelling accuracy for reduced operator stress and fatigue, high lift capacity, high reach. Careful attention has been paid to every detail: the loader is painted with a Blue Icon high-quality paint designed to withstand severe weather conditions and hard wear and is packed and shipped with utmost care to avoid damage.

Built with versatility in mind, the Landini front loaders are offered with a wide range of implements for a variety of handling, transport and maintenance tasks including light-material buckets, earth buckets, multi-material buckets, manure forks, round bale forks and pallet forks. All Landini front loaders, implements and components are entirely Italian made.

Choosing Landini means relying on a long tradition of innovation, reliability and productivity.



HIGHLIGHTS

1. Ergonomically-designed joystick for control of following functions: boom raise/lower, bucket load/unload, 3rd and 4th function, Hi-Lo transmission, HML transmission.
2. Crop protection: loader frame does not reduce tractor ground clearance, minimizing crop damage.
3. Front loader does not reduce tractor turning radius.
4. Front loader features a suspension with two nitrogen-charged accumulators for smoother operation and enhanced ride comfort.
5. Rigid hydraulic lines reduce oil overheating and simplify maintenance operations.
6. All Landini tractor cabs feature a transparent, high-visibility roof hatch that provides unobstructed view of front loader at all times.
7. Front loader can also be installed and used in conjunction with a front-mounted hitch.
8. Euro implement carrier allows a wide range of implements to be fitted to Landini front loaders.
9. A bucket level gauge allows operator to determine the angle of implement to the ground, making manoeuvres easier and safer.
10. High lifting capacity: loader frame constructed from Domex steel or HLE steel.



CONTENTS

FRONT LOADER AND TRACTORS	6
FRONT LOADER LINEUP	8
JOYSTICK CONTROL	11
MOUNTING AND REMOVING LOADER	12
FRONT LOADER TECHNOLOGIES	14
FRONT LOADER SPECIFICATIONS	16
SERIE 7 ROBO-SIX - 6-CYLINDER - STAGE V	18
SERIE 7 ROBO-SIX - 4-CYLINDER	19
SERIE 6C	20
SERIE 6H	21
SERIE 5STAGE V	22
5-085 STAGE V	23
SERIE 4 STAGE V	24
SERIE 4D	25
REX4 V-F-S-GT	26
SERIE 2	27
MISTRAL2 STAGE V	28
IMPLEMENTS	30



FRONT LOADER AND

LANDINI TRACTORS AND FRONT LOADERS: THE PERFECT MATCH

All Landini front loaders are built to perfectly fit the Landini tractor range and designed to further enhance your tractor's performance, versatility and durability. Each loader comes fitted with a push-pull adaptor or a Faster multi-coupler. The brackets are designed to distribute the weight over three points: at the front, middle and rear of the loader. This design provides even weight distribution across the entire tractor, thereby reducing the load and, consequently, the wear and tear on the front axle. Our front-end loaders are a perfect match for your Landini tractor. Together, they create an unbeatable combination that will boost your efficiency and productivity.



D TRACTORS

UNMATCHED VISIBILITY AND SAFETY

For greater operator convenience, all Landini cabs are equipped with a large roof hatch that provides extra visibility during front loader work. All cabs are FOPS-certified to protect operator from falling objects.



IMPLEMENTS FOR EVERY JOB

Landini offers a comprehensive range of attachments to fit its front-end loader lineup. Designed with efficiency and reliability in mind, our front loader implements will allow operator to move a variety of materials including manure, silage, straw bales and pallets, with ease and efficiency.





FRONT LOADER LINEUP

LANDINI FRONT LOADERS: BUILT FOR STRENGTH AND PERFORMANCE

The new Landini front loader ranges offer a refreshed design and top-grade steel frames for maximum performance and strength.

Lp RANGE



Lp RANGE: UNCOMPROMISING DESIGN AND PERFORMANCE

The one-piece frame from top-quality Domex special steel ensures:

- Best-in-class performance
- Unequaled strength and long-term durability
- Cutting-edge design with slim boom profile and integrated hoses and suspension system for unobstructed visibility

Lt RANGE



Lt RANGE: OUTSTANDING PERFORMANCE AND STRENGTH

The one-piece frame from high-performance Domex special steel ensures:

- Excellent performance
- Rugged construction and durability
- Modern design with slim boom profile and hydraulic lines mounted inside the boom for uncluttered view and smooth loader operation

Li RANGE: LIGHTNESS AND HIGH PERFORMANCE

Oversized, rectangular-section frame built from HLE special steel. A mid-range product that combines quality, high performance and functionality with good value for money.

Lc RANGE: SIMPLE DESIGN AND LIGHTWEIGHT CONSTRUCTION

Rectangular-section frame from high-quality HLE special steel. A basic range that combines excellent versatility and ease of use with great value for money.

Li RANGE



Lc RANGE



COMPACT RANGE



COMPACT RANGE: TAILOR-MADE FOR COMPACT TRACTORS

Made from high-quality HLE special steel, this range offers a compact design with a small, light footprint.



MANUAL LEVELLING F VERSION

On loaders with manual levelling, the operator uses the joystick to level the implement parallel to the ground. This prevents loss of load during handling operations.



MECHANICAL SELF-LEVELLING M VERSION

Loaders with mechanical self-levelling system feature a levelling linkage located below the boom which automatically keeps the implement level throughout the lift without the need for the operator to use the joystick. This system reduces operator stress and fatigue.



HYDRAULIC SELF-LEVELLING H VERSION

The self-levelling function is controlled by the hydraulic system which activates a compensating cylinder located under the implement. This system reduces operator workload and fatigue. Not available for the Lc range.



JOYSTICK

LANDINI JOYSTICKS FOR PRECISE CONTROL AND COMFORT

A modern, ergonomic design for effortless and precise loader control: this is the key feature of the new line of joysticks from Landini. If not fitted on the tractor as original equipment, a Landini joystick can be installed at a later stage by choosing from the following options:



TC BASIC

Designed with ergonomics in mind, the TC Basic joystick control allows for smooth and comfortable operation in any situation. It controls two hydraulic lines.



TC ADVANCED

Featuring eight buttons, this joystick controls the spool valves equipped with third and fourth hydraulic line or with hydraulic implement quick-release system. The two side buttons can be used to change gear.



TC PROFI

The TC Profi features three buttons to control the spool valves equipped with a third hydraulic line. The two side buttons can be used to change gear.



TC SPEED

This electronic proportional control is used to control the electrohydraulic spool valves. It communicates via a CAN-bus interface.

MOUNTING AND REMOVAL

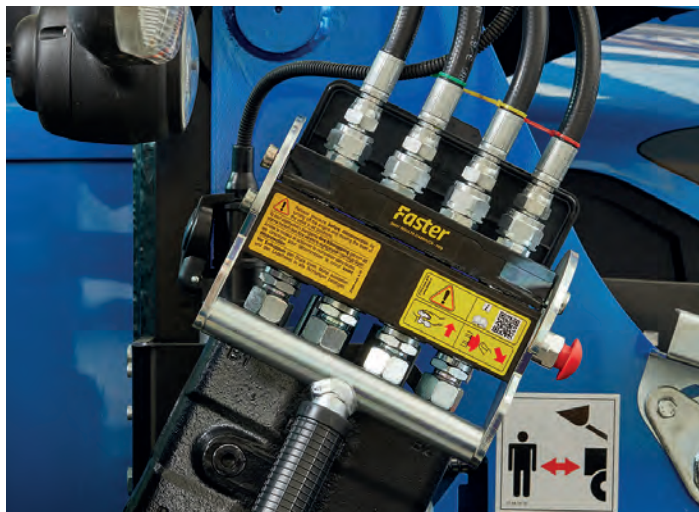
VELOTAK SYSTEM FOR EASY LOADER MOUNTING AND REMOVAL

Placing the user at the centre of its design philosophy, Landini has developed the Velotak system, an advanced quick-attach/detach system that allows the loader to be easily mounted and removed from the tractor in a few seconds by means of a simple lever, without the aid of tools. The loader parking stands can be adjusted with millimetre precision, enabling easy mounting and removal on any terrain or slope. Locking and unlocking positions are marked by coloured stickers. The Velotak system makes the operator's work easier and faster, reducing stress and fatigue.



FLASH SYSTEM FOR QUICK CONNECTION OF HYDRAULIC LINES

The Flash quick-connect multi-coupler allows the operator to connect and disconnect all hydraulic lines with a single operation. The Flash multi-coupler comes standard on all Lt and Lp loaders and is available as an option on the Lc and Li ranges.



MOVING LOADER



QRC FLASH CONNECTOR FOR THIRD-FUNCTION HYDRAULIC LINE

This connector provides simple and reliable connection of implements requiring third-function hydraulics. The QRC Flash allows operator to connect and disconnect all implement lines with a single operation, even when the system is pressurized. The connector is easy to clean to prevent dirt build-up in the loader and tractor hydraulics.

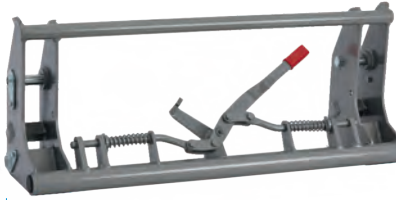


3SL/4SL FEATURE FOR IMPLEMENTS WITH ADDITIONAL HYDRAULIC FUNCTIONS

The 3SL and 4SL features allow the use of implements with additional hydraulic functions such as grabs with extra lift capacity and side-shift function. A cover protects the solenoid valves from shocks and wear.



FRONT LOADER TECH



EURO IMPLEMENT CARRIER

This is the basic version on the Lc, Li, Lt and Lp loader ranges. This type of implement carrier meets the ISO 23206 standard and allows for easy connection of all implements with Euro attachment system. This carrier comes in Euro-Eco version for the Lc range and in a Euro System quick-release version for the other ranges.



LANDINI IMPLEMENT CARRIER

This quick-release implement carrier is available for the Lp, Lt, Li and Lc loader ranges. This type of implement carrier has an attachment system that matches only the Landini implements.



COMPACT IMPLEMENT CARRIER

This implement carrier is specially designed for the Compact loader range. It is compatible with the implements developed by Landini specifically for the Compact range.

1 GENIUS SUSPENSION SYSTEM

A suspension system with two nitrogen accumulators help absorb the shocks produced during loader work, ensuring smooth operation and reducing stress on both tractor and front loader. The Genius suspension also reduces tyre wear and minimizes operator fatigue while increasing productivity. The device is equipped with a protection cover and a shutoff valve for overriding the system when required. The Genius suspension system is standard on all models of the Lt and Lp ranges and optional on the other ranges.



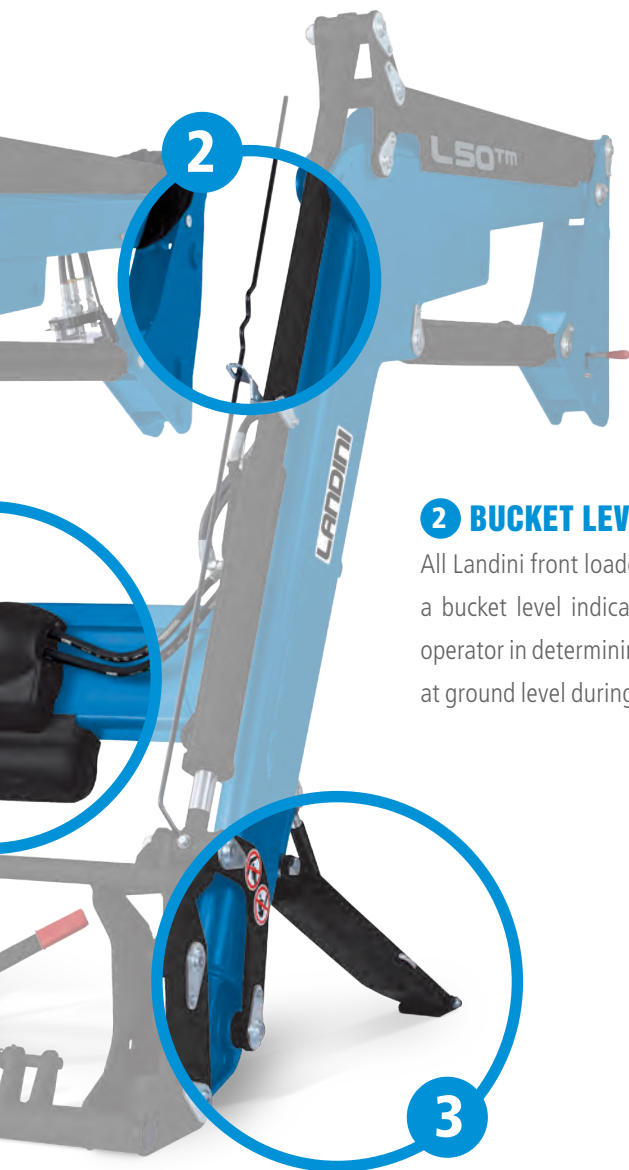
4 THIRD FUNCTION AND THIRD + FOURTH FUNCTION

These options are required when the front-end loader operates implements equipped with hydraulic functions. The third function is required to operate implements like buckets, forks with grapple, grab forks and side-shift forks. The third and fourth function is required for more complex implements such as round bale forks with extra lift and side-shift function.

FLOATING 4TH POSITION

This device is mounted on the hydraulic block to power the front loader cylinders. The floating 4th position is recommended when using implements that follow the ground contour.

NOLOGIES



2 BUCKET LEVEL INDICATOR

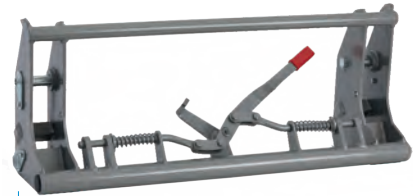
All Landini front loaders are equipped with a bucket level indicator which assists the operator in determining the bucket position at ground level during handling operations.

3 PARKING STANDS

The Landini front-end loaders feature long parking stands with adjustable cross braces ensuring maximum stability on uneven or sloping ground. During loader work, the parking stands are stored inside the boom to ensure that they do not interfere with the tractor wheels.

EASY MAINTENANCE

The brackets of the Landini front loaders are designed to allow ease of access to all tractor service points, making routine maintenance tasks simple and time-saving.



HYDRO IMPLEMENT CARRIER

The Hydro carrier allows the operator to comfortably attach and detach implements by simply using the joystick, without dismounting the tractor. This quick connect/disconnect system requires a dedicated hydraulic line.



COMBI IMPLEMENT CARRIER

This implement carrier allows the use of a single attachment system to connect both Euro standard and ALO/Q3 implements. With the addition of special adaptors, the Combi carrier also allows the use of MX implements.



DUAL SYSTEM IMPLEMENT CARRIER

The Dual System carrier allows using a single attachment system to connect all Euro standard implements. With the addition of special adaptors, this carrier also allows the use of MX implements.

FRONT LOADER SPEC



IFICATIONS



SERIE 7 STAGE V

6-CYLINDER



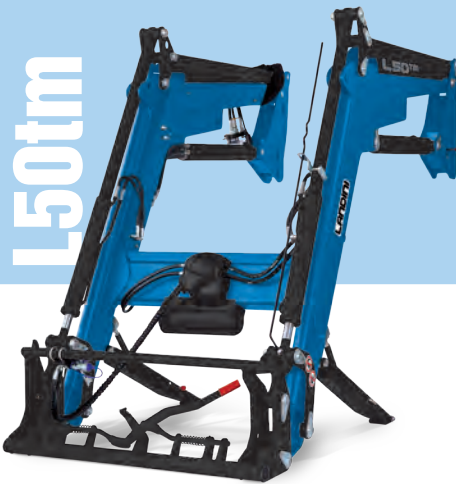
FRONT LOADER MODELS

	ref	um	L50tm	L50ph
Lift capacity with bucket at ground level, measured at 300 mm from pivot point	Q1	kg	2700	2700
Lift capacity with bucket fully raised, measured at 300 mm from pivot point	Q2	kg	2400	2400
Maximum lift height at pivot point	A	mm	4400	4400
Maximum lift height at pivot point with bucket dumped	B	mm	3500	3500
Bucket rollback angle at ground level	C	-	45°	45°
Bucket dump angle	D	-	90°	90°
Euro implement carrier			YES	YES
Lift time to full height*		s	9	9
Bucket dump time*		s	5	3
Sigma4 implement carrier			OPTION	OPTION
Boom weight without options		kg	735	725

* Value obtained by reference to a hydraulic pump with an average flow rate of 40 l/min. Clearly, this value will decrease when using a higher flow rate pump and will increase when a lower flow rate pump is used.

4-CYLINDER

SERIE 7



	ref	um	FRONT LOADER MODELS	
			L50tm	L50ph
Lift capacity with bucket at ground level, measured at 300 mm from pivot point	Q1	kg	2700	2700
Lift capacity with bucket fully raised, measured at 300 mm from pivot point	Q2	kg	2400	2400
Maximum lift height at pivot point	A	mm	4400	4400
Maximum lift height at pivot point with bucket dumped	B	mm	3500	3500
Bucket rollback angle at ground level	C	-	45°	45°
Bucket dump angle	D	-	90°	90°
Euro implement carrier			YES	YES
Lift time to full height*		s	9	9
Bucket dump time*		s	5	3
Sigma4 implement carrier			OPTION	OPTION
Boom weight without options		kg	735	725

* Value obtained by reference to a hydraulic pump with an average flow rate of 40 l/min. Clearly, this value will decrease when using a higher flow rate pump and will increase when a lower flow rate pump is used.

SERIE 6C



FRONT LOADER MODELS

	ref	um	L30im	L30tm
Lift capacity with bucket at ground level, measured at 300 mm from pivot point	Q1	kg	1700	2000
Lift capacity with bucket fully raised, measured at 300 mm from pivot point	Q2	kg	1650	1900
Maximum lift height at pivot point	A	mm	3870	3870
Maximum lift height at pivot point with bucket dumped	B	mm	3010	3010
Bucket rollback angle at ground level	C	-	45	45
Bucket dump angle	D	-	90	90
Euro implement carrier			YES	YES
Lift time to full height*		s	7	9
Bucket dump time*		s	5	5
Sigma4 implement carrier			OPTION	OPTION
Boom weight without options		kg	533	680

* Value obtained by reference to a hydraulic pump with an average flow rate of 40 l/min. Clearly, this value will decrease when using a higher flow rate pump and will increase when a lower flow rate pump is used.

SERIE 6H



L20cm



L20im



L20tm



	FRONT LOADER MODELS				
	ref	um	L20cm	L20im	L20tm
Lift capacity with bucket at ground level, measured at 300 mm from pivot point	Q1	kg	1200	1500	1800
Lift capacity with bucket fully raised, measured at 300 mm from pivot point	Q2	kg	1220	1400	1700
Maximum lift height at pivot point	A	mm	3800	3800	3800
Maximum lift height at pivot point with bucket dumped	B	mm	2940	2940	2940
Bucket rollback angle at ground level	C	-	45	45	45
Bucket dump angle	D	-	90	90	90
Euro implement carrier			YES	YES	YES
Lift time to full height*		s	7	7	9
Bucket dump time*		s	5	5	5
Sigma4 implement carrier			OPTION	OPTION	OPTION
Boom weight without options		kg	400	500	620

* Value obtained by reference to a hydraulic pump with an average flow rate of 40 l/min. Clearly, this value will decrease when using a higher flow rate pump and will increase when a lower flow rate pump is used.

SERIE 5 STAGE V



	FRONT LOADER MODELS				
	ref	um	L20cm	L20im	L20tm
Lift capacity with bucket at ground level, measured at 300 mm from pivot point	Q1	kg	1200	1500	1800
Lift capacity with bucket fully raised, measured at 300 mm from pivot point	Q2	kg	1220	1400	1700
Maximum lift height at pivot point	A	mm	3800	3800	3800
Maximum lift height at pivot point with bucket dumped	B	mm	2940	2940	2940
Bucket rollback angle at ground level	C	-	45	45	45
Bucket dump angle	D	-	90	90	90
Euro implement carrier			YES	YES	YES
Lift time to full height*		s	7	7	9
Bucket dump time*		s	5	5	5
Sigma4 implement carrier			OPTION	OPTION	OPTION
Boom weight without options		kg	400	500	620

* Value obtained by reference to a hydraulic pump with an average flow rate of 40 l/min. Clearly, this value will decrease when using a higher flow rate pump and will increase when a lower flow rate pump is used.



5-085 STAGE V

L15cm



L15im



	ref	um	FRONT LOADER MODELS	
			L15cm	L15im
Lift capacity with bucket at ground level, measured at 300 mm from pivot point	Q1	kg	900	1100
Lift capacity with bucket fully raised, measured at 300 mm from pivot point	Q2	kg	880	1000
Maximum lift height at pivot point	A	mm	3300	3300
Maximum lift height at pivot point with bucket dumped	B	mm	2360	2360
Bucket rollback angle at ground level	C	-	45	45
Bucket dump angle	D	-	90	90
Euro implement carrier			YES	YES
Lift time to full height*		s	7	7
Bucket dump time*		s	5	5
Sigma4 implement carrier			OPTION	OPTION
Boom weight without options		kg	340	443

* Value obtained by reference to a hydraulic pump with an average flow rate of 40 l/min. Clearly, this value will decrease when using a higher flow rate pump and will increase when a lower flow rate pump is used.

SERIE 4 STAGE V



	ref	um	FRONT LOADER MODELS	
			L10cm	L10im
Lift capacity with bucket at ground level, measured at 300 mm from pivot point	Q1	kg	900	1100
Lift capacity with bucket fully raised, measured at 300 mm from pivot point	Q2	kg	880	1000
Maximum lift height at pivot point	A	mm	3200	3200
Maximum lift height at pivot point with bucket dumped	B	mm	2260	2260
Bucket rollback angle at ground level	C	-	45	45
Bucket dump angle	D	-	90	90
Euro implement carrier			YES	YES
Lift time to full height*		s	7	7
Bucket dump time*		s	5	5
Sigma4 implement carrier			OPTION	OPTION
Boom weight without options		kg	330	433

* Value obtained by reference to a hydraulic pump with an average flow rate of 40 l/min. Clearly, this value will decrease when using a higher flow rate pump and will increase when a lower flow rate pump is used.

SERIE 4D



L10cm



L10im



	ref	um	FRONT LOADER MODELS	
			L10cm	L10im
Lift capacity with bucket at ground level, measured at 300 mm from pivot point	Q1	kg	900	1100
Lift capacity with bucket fully raised, measured at 300 mm from pivot point	Q2	kg	880	1000
Maximum lift height at pivot point	A	mm	3200	3200
Maximum lift height at pivot point with bucket dumped	B	mm	2260	2260
Bucket rollback angle at ground level	C	-	45	45
Bucket dump angle	D	-	90	90
Euro implement carrier			YES	YES
Lift time to full height*		s	7	7
Bucket dump time*		s	5	5
Sigma4 implement carrier			OPTION	OPTION
Boom weight without options		kg	330	433

* Value obtained by reference to a hydraulic pump with an average flow rate of 40 l/min. Clearly, this value will decrease when using a higher flow rate pump and will increase when a lower flow rate pump is used.

REX4 V-F-S-GT



FRONT LOADER MODELS

	ref	um	L15cm	L15im
Lift capacity with bucket at ground level, measured at 300 mm from pivot point	Q1	kg	900	1100
Lift capacity with bucket fully raised, measured at 300 mm from pivot point	Q2	kg	880	1000
Maximum lift height at pivot point	A	mm	3300	3300
Maximum lift height at pivot point with bucket dumped	B	mm	2360	2360
Bucket rollback angle at ground level	C	-	45	45
Bucket dump angle	D	-	90	90
Euro implement carrier			YES	YES
Lift time to full height*		s	7	7
Bucket dump time*		s	5	5
Sigma4 implement carrier			OPTION	OPTION
Boom weight without options		kg	340	443

* Value obtained by reference to a hydraulic pump with an average flow rate of 40 l/min. Clearly, this value will decrease when using a higher flow rate pump and will increase when a lower flow rate pump is used.



SERIE 2

L830m



L850m



	FRONT LOADER MODELS			
	ref	um	L830m CAB	L850m PLAT
Lift capacity with bucket at ground level, measured at 300 mm from pivot point	Q1	kg	650	650
Lift capacity with bucket fully raised, measured at 300 mm from pivot point	Q2	kg	600	600
Maximum lift height at pivot point	A	mm	2550	2550
Maximum lift height at pivot point with bucket dumped	B	mm	1800	1800
Bucket rollback angle at ground level	C	-	45	45
Bucket dump angle	D	-	85	85
Euro implement carrier			NO	NO
Lift time to full height*		s	5	5
Bucket dump time*		s	4	4
Sigma4 implement carrier			YES	YES
Boom weight without options		kg	180	180

* Value obtained by reference to a hydraulic pump with an average flow rate of 40 l/min. Clearly, this value will decrease when using a higher flow rate pump and will increase when a lower flow rate pump is used.

MISTRAL2

STAGE V



	ref	um	FRONT LOADER MODELS
			L830m/L850m
Lift capacity with bucket at ground level, measured at 300 mm from pivot point	Q1	kg	650
Lift capacity with bucket fully raised, measured at 300 mm from pivot point	Q2	kg	600
Maximum lift height at pivot point	A	mm	2550
Maximum lift height at pivot point with bucket dumped	B	mm	1800
Bucket rollback angle at ground level	C	-	45°
Bucket dump angle	D	-	85°
Euro implement carrier			NO
Lift time to full height*		s	5
Bucket dump time*		s	4
Sigma4 implement carrier			YES
Boom weight without options		kg	180

* Value obtained by reference to a hydraulic pump with an average flow rate of 40 l/min. Clearly, this value will decrease when using a higher flow rate pump and will increase when a lower flow rate pump is used.

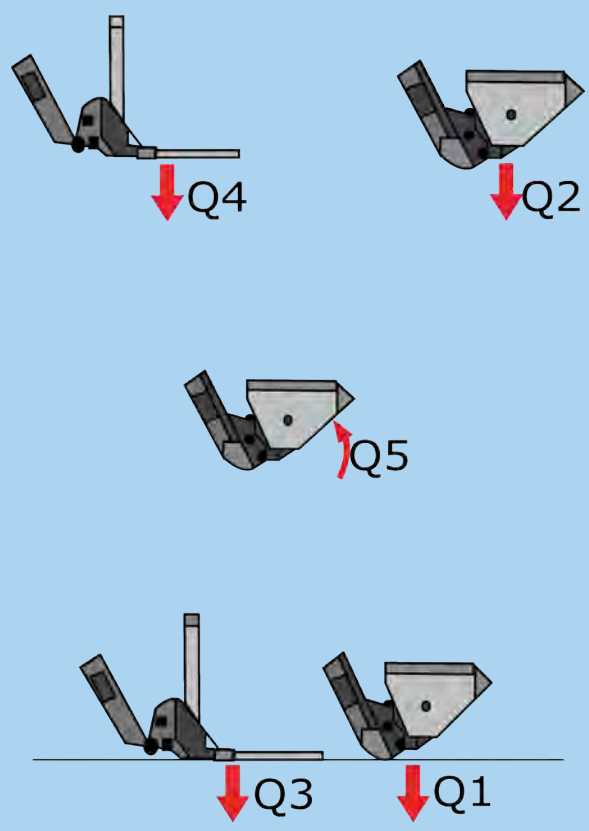
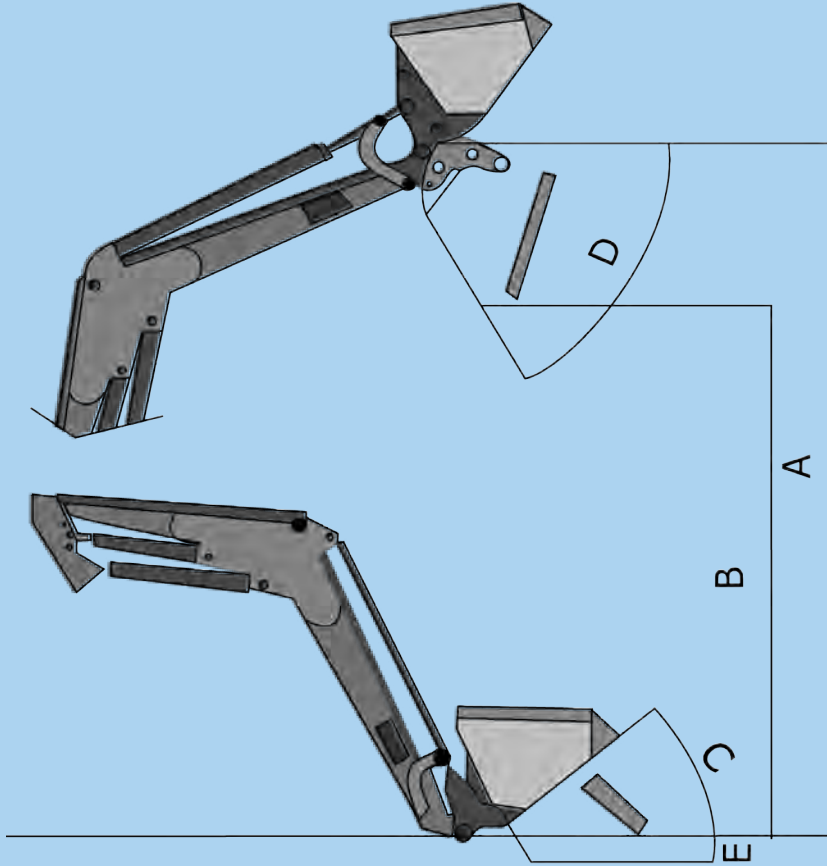
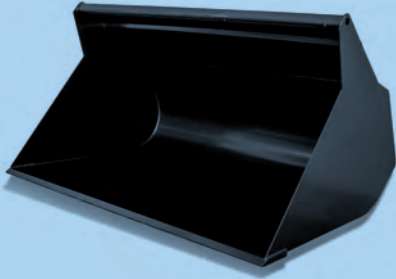


TABLE REFERENCES

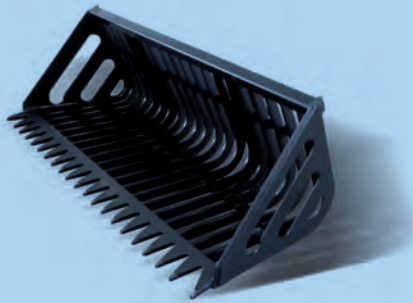
IMPLEMENTS

CEREAL BUCKET



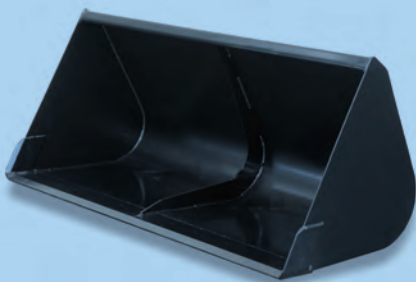
	WIDTH (mm)	LENGTH X HEIGHT (mm)	SAE CAPACITY (m ³)	WEIGHT (Kg)
BC 1800	1800	958 x 1050	0.88	266
BC 2000	2000	958 x 1050	0.99	284
BC 2200	2200	958 x 1050	1.09	305
BC 2400	2400	958 x 1050	1.19	322

STONE BUCKET



	WIDTH (mm)	LENGTH X HEIGHT (mm)	WEIGHT (Kg)
BSA 1600	1600	965 x 750	280
BSA 1800	1800	965 x 750	325
BSA 2000	2000	965 x 750	355
BSA 2200	2200	965 x 750	390
BSA 2400	2400	965 x 750	425

EARTH BUCKET



	WIDTH (mm)	LENGTH X HEIGHT (mm)	SAE CAPACITY (m ³)	WEIGHT (Kg)
BT 1350	1350	790 x 735	0.36	160
BT 1500	1500	790 x 735	0.41	170
BT 1600	1600	790 x 735	0.43	175
BT 1800	1800	790 x 735	0.49	198
BT 2000	2000	790 x 735	0.55	205
BT 2200	2200	790 x 735	0.60	215
BT 2400	2400	790 x 735	0.66	247

GRAB BUCKET

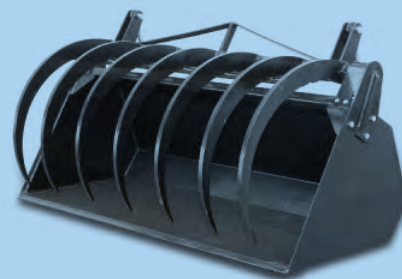


	WIDTH (mm)	LENGTH X HEIGHT (mm)	SAE CAPACITY (m ³)	WEIGHT (Kg)
BK 1500	1500	1150 x 910	0.76	342
BK 1980	1980	1150 x 910	1	412
BK 2200	2200	1150 x 910	1.12	430

IMPLEMENTS

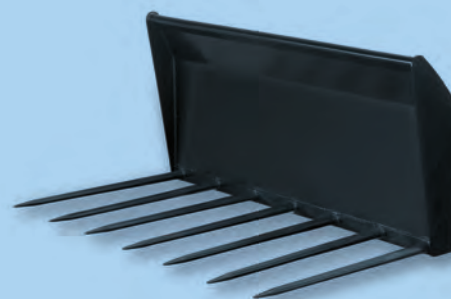
MULTIPURPOSE BUCKET

	WIDTH (mm)	LENGTH X HEIGHT (mm)	SAE CAPACITY (m ³)	WEIGHT (Kg)
BM 2000	2000	1090 x 1060	1.1	562
BM 2200	2200	1090 x 1060	1.21	612



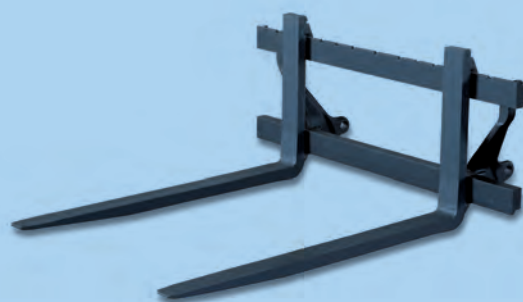
MANURE FORK

	WIDTH (mm)	LENGTH X HEIGHT (mm)	TEETH (Nm)	WEIGHT (Kg)
FLE 1500	1500	900 x 800	7	135
FLE 1980	1980	900 x 800	9	170
FLE 2200	2200	900 x 800	10	180



PALLET FORK

	WIDTH X LENGTH X HEIGHT (mm)	MAX LOAD CAPACITY (Kg)	WEIGHT (Kg)
FP 1200	1200 x 400 x 1140	1000	140
		2000	150



GRAB FOR ROUND BALES

LARGH. X LUNGH. X ALT. (mm)	BALE SIZE min/max (mm)	PORTATA MAX (Kg)	ADDITIONAL HYDRAULIC LINES	WEIGHT (Kg)
min/max 1160-2550 x 900 x 1600	800 / 1500	1000	2	233



Landini®

Passion for Innovation.

Argo Tractors S.p.A.

via G. Matteotti, 7 | 42042 Fabbrico [RE] Italia
t. +39.0522.656.111 | f. +39.0522.656.476

webmaster@argotracors.com | www.argotracors.com



Landini®
LUBRICANTS

EN

6697633A1 - 09/2021

graphic design: gruppo saldatori | www.grupposaldatori.com
All data and illustrations provided in this brochure are
for information purposes only and can be changed without notice