

RANGE



TRACTOR RANGE

Landini

Passion for Innovation.

LANDINI TRACTOR RANGE, THE BEST IN THE FIELD





SPECIALTY TRACTORS

MISTRAL2 Plat / Cab	6
REX3 Plat / Cab	8
REX4 Cab	10
REX4 Plat	12
SERIE 5 HC	14



CRAWLER TRACTORS

TREKKER4	18
----------	----



UTILITY TRACTORS

SERIE 4	22
5-085	24
SERIE 5	26



OPEN FIELD TRACTORS

SERIE7 SWB	30
SERIE 7 LWB	32

SPECIALTY
TRACTORS



SPECIALTY TRACT



LANDINI SPECIALTY TRACTORS: GEARED FOR PRODUCTIVITY

Tradition.

If every trip starts with one step, in the history of specialty tractors the first step was taken by Giovanni Landini. Landini specialty tractors boast a unique, globally recognised tradition. Compact, manoeuvrable, versatile and comfortable, Landini specialty tractors are designed and manufactured in Italy's Motor Valley, the land of mechatronics. State-of-the-art manufacturing plants, top-of-the-range components, strict quality controls and, last but not least, the dedication and expertise of the Landini workforce are the main ingredients of a success story that has been lasting for over 130 years.

Configurability.

Normally not all the technologies fitted on a tractor are used. With a goal to provide only what the customer really needs, eliminating unnecessary costs, Landini offers the most customizable specialty tractors on the market. Configurable components and features include the cab, some driving and operating controls, engine power, transmission, front axle, hydraulic system and tyres. Equipped with easy-to-use, state-of-the-art technology, Landini specialty tractors ensure true user-friendly configurability.

Flexibility.

Besides providing true operating comfort, Landini specialty tractors offer ultimate versatility because they are designed and built from the ground up around the everyday needs of farmers. Moving nimbly within tight quarters and between narrow crop rows, these tractors will perform a variety of agricultural tasks with ease. Landini never ceases to surprise because it places the human being at the core of all its innovative solutions.



MISTRAL 2

HIGHLIGHTS

- The lowest bonnet and steering wheel in this tractor class, only 1130 mm from the ground: ideal for vegetable farming, vine and fruit growing, tunnel and greenhouse crops.
- New design with sleek and dynamic lines for functionality and style.
- Comfort guaranteed: high-visibility four-post cab with opening front and rear windscreens, roomy driving position, tilt-adjustable steering wheel, ergonomic controls, automotive-grade fit and finish, radio and climate control.
- Front four-wheel drive axle with Hydralock differential lock and four-wheel braking: agility, traction and safety in all terrain conditions.
- High-flow pump with 35 + 20 l/min and up to 3 remote valves for enhanced performance and maximum implement compatibility.



GREEN POWER WITH STAGE V KOHLER ENGINE

More power: Kohler KDI 1903 TCR engines with 49 hp and 57 hp and maximum torques of 180 Nm and 200 Nm already at 1200 rpm. More eco-friendly: engines meet Stage V emission regulations. More visibility: the exhaust after-treatment system is located in a lower position, out of operator's visual field. More productivity: the DPF system reduces downtime.



CHAMPION OF COMPACTNESS

The new **Mistral2** is designed to combine superior performance with respect for the environment. Nimble and lightweight, this tractor provides excellent manoeuvrability and reduced soil compaction, making it ideal for vegetable farming, greenhouse operations and overhead trellis systems. Due to its agility, the **Mistral2** is equally at home in orchards, vineyards and municipal applications like maintenance of green areas.

More efficient and eco-friendly than ever, the **Mistral2** is powered by a Stage V Kohler KDI 1903 TCR 1.9-litre, three-cylinder turbo aftercooled engine that delivers 49 and 57 hp and achieves maximum torques of 180 and 200 Nm already at 1200 rpm, the best torque values in its class. The transmission with steering-column synchro shuttle provides 12 FWD + 12 REV speeds that can be increased to 16 FWD + 16 REV with addition of a creep speed unit. With a minimum height of only 1230 mm from the ground for the STD version and 1130 mm for the GE version, the **Mistral2** boasts the lowest bonnet in its class; this makes for enhanced visibility to the front and easy operation in low-clearance situations. Featuring a minimum width of only 1260 mm, the **Mistral2** is also the most compact model in the specialty tractor segment. In addition, the tractor's tight turning radius and the wheelbase of only 1790 mm, the shortest in its class, make headland turns easier and faster, thereby reducing working time, fuel consumption and operator fatigue. In line with the brand's tradition, the new **Mistral2** fully responds to customer demand for innovation, productivity and comfort.



MISTRAL2 GE, SPECIALISED IN LOW-CLEARANCE OPERATIONS

Specially designed for work in vegetable growing farms, greenhouses, vineyards and orchards in overhead trellis systems, the Mistral2 comes fitted with 20" and 24" rear tyres for maximum traction and stability. The front and rear axles of the Mistral2 GE are respectively 100 mm and 95 mm lower than on the Mistral2 STD.



TECHNOLOGY AT THE SERVICE OF EFFICIENCY

The instrument panel displays: machine status, engine diagnosis, warning lights, PTO and advance speeds, information on work area and consumptions. In addition, the Landini Fleet Management monitors: efficiency, consumptions, working hours and maintenance.



REX3

HIGHLIGHTS

- The **REX3** tractor is designed for total versatility and compatibility with rear-, front- and mid-mounted implements. Front PTO and front hitch with up to 1000 kg lift capacity.
- Kohler Stage V 2.5L, 4-cylinder engines deliver 68 and 75 hp and achieve maximum torque at low engine rpm.
- DOC/DPF exhaust after-treatment without regeneration for enhanced efficiency and productivity. System located beside the bonnet to keep a compact size and maximise operator visibility.
- The Engine Memo Switch stores and recalls the optimal engine revs for smoother headland turns.
- Front axle with electro-hydraulic differential lock and four-wheel drive braking.

PLAT



CAB STD



CAB LP





THE VERSATILE SPECIALIST

The **REX3** specialty tractor from Landini combines a compact footprint with extreme manoeuvrability and versatility. It comes in two versions: **REX3 F** for work in vineyards and between tight orchard rows and **REX3 GE** for low orchards and vineyards, overhead trellis systems and tunnel crops. Both versions are equally at home in municipal applications. The driving position is available in three versions: ROPS, low-profile cab and standard cab. Creature comforts of the standard cab include a functional monitor bracket. Both models in the range are powered by Kohler 2.5-litre, 16-valve, 4-cylinder engines that deliver 68 hp and 75 hp. The Engine Memo Switch saves and manages the engine revs. The Stage V after-treatment system is fitted beside the bonnet to keep the tractor compact while improving visibility and manoeuvrability. The synchro shuttle transmission provides up to 16 FWD + 16 REV speeds with creeper.

With an external width of 1350 mm, a minimum height to steering wheel of 1265 mm and a wheelbase of only 1950 mm, the **REX3** combines an extremely compact footprint with a tight turning radius. This allows for easy manoeuvrability in confined spaces, thereby reducing working time, operator fatigue and fuel consumption. To maximise tractor versatility, the **REX3** comes with supports for the attachment of mid-mounted implements that can be used in combination with a front hitch and PTO. True to the Landini tradition, the **REX3** offers a perfect combination of innovative technology, uncompromising comfort and productivity.

MID-MOUNT SUPPORTS STANDARD

The REX3 becomes even more versatile with new mid-mount supports. These factory fitted supports allow the attachment of implements specifically designed to work between crop rows or in confined spaces where a reduced footprint is required.



WAFFLE RIMS

Landini fits on REX3 specialty tractors waffle rims designed for open field tractors. These high-strength wheel rims will support heavier loads and improve stability both in the field and on the road, enhancing driving comfort and safety.



LOW-PROFILE MONOCOQUE CAB

With a width of 116 cm at the base and 86 cm at the top and a height of 187 cm from the ground, the low-profile cab of the REX3 causes no damage to foliage. Designed with comfort in mind, this cab features wide access doors, a tilt steering wheel, a multifunctional console, climate control system, radio and backup camera.

All control levers are located close to driver, leaving the central tunnel uncluttered.





REX4 CAB

HIGHLIGHTS

- **REX4 Cab** tractor available in four versions: **F** for orchards, **S** for narrow-row orchards, **V** for vineyards, **GT** for wide-row orchards and open field.
- New high-visibility cab; optionally available with Category 4 activated carbon air filter.
- Robo-Shift transmission with three-speed on-the-go powershift (HML): automated gear shifting and speed control via an electronic multifunction controller.
- Electrohydraulic power shuttle with electronically adjustable shuttle response.
- Maintenance intervals extended up to 1000 hours.
- Open-centre hydraulic system with either a dual pump providing 58 + 30 l/min or a triple pump providing 36 + 58 + 30 l/min. The system supplies a flow rate of 54 l/min already at 1500 rpm.
- Wide choice of tyres. Set of waffle-type high-speed rims available as an option.
- Front and rear ISOBus connection. The innovative ISOBus Green system guarantees maximum compatibility with all mechanical and hydraulic implements.



BLUEICON EDITION & FULL LED

With the special Landini Blueicon Limited Edition, Landini offers the ultimate in style and elegance. The new REX4 boasts a distinctive trim package with metallic blue finish and matte black wheel rims. Optionally, the tractor can be fitted with Full-LED lights for improved visibility in any working conditions.



THE KING OF STAGE V SPECIALTY TRACTORS

The new **REX4** tractor range from Landini sets a world benchmark for row-crop tractors. Available in F, S, V and GT versions, the **REX4** Cab stands out for the sleek, dynamic lines of its bonnet with full-LED lights seamlessly integrated into the front grill and for its high-visibility cab with flat-deck platform and extendable mirrors that give this tractor an automotive look and feel. The new **REX4** Cab tractors are powered by Stage V Deutz 2.9-litre, 4-cylinder turbo intercooled engines with common rail injection system and power ratings from 75 to 112 hp. The DPR/DOC/SCR after-treatment system is located under the bonnet to keep the tractor front uncluttered for maximum visibility while maintaining a compact size. The transmission provides 12 FWD + 12 REV speeds with synchro shuttle and up to 48 FWD + 16 REV speeds with Roboshift HML powershift and power shuttle. Control of three-stage on-the-go powershift and speeds is via a multifunction controller. The hydraulic system can be equipped with either an 88 l/min dual pump or a 124 l/min triple pump. The electronic rear hitch has a lift capacity of 2700 kg and is available on request with up to 3400 kg lift capacity for the **REX4** GT. A front hitch with 1400 kg lift capacity and a 1000-rpm front PTO are supplied as an option. The rear PTO is available with a choice of four speeds. For added versatility, the **REX4** Cab can be fitted with a mounting frame for mid-mount implements. The tractor is further equipped with ADS, ISObus, Auto Guidance and Telemetry systems for enhanced driving comfort and ease of operation. In keeping with Landini's tradition of excellence, the **REX4** Cab is designed and built with cutting-edge features to offer farmers uncompromising comfort and productivity.



ADVANCED DRIVING SYSTEM

Managing tractor and implement functions simultaneously requires great care. The innovative ADS assisted driving system enables the operator to fully concentrate on the task at hand. Every information on the implements used is constantly displayed on screens that can be fitted onto a functional monitor bracket.



CAB AND FRONT SUSPENSION FOR CONVENIENT OPERATION

The cab is mounted on a Hydro Silent Block suspension system or optionally on spring-type shock absorbers allowing a vertical travel of up to 60 mm. For the F, S and GT models a suspended front axle is available to effectively reduce vibration levels and enhance ride comfort.



REX4 PLAT

HIGHLIGHTS

- **REX4** Plat tractor available in four versions: F for orchards, GE for low orchards, GB for greenhouses and overhead trellis systems, GT for wide-row orchards and open field.
- New low-profile cab option for unmatched compact size and maximum comfort all year round.
- New full-LED lights and Landini Bluelcon Limited Edition with metallic blue finish and matte black wheel rims for efficiency and style.
- New suspended front axle for the F and GT versions for maximum comfort in the field and on the road.
- Maintenance intervals extended to 1000 hours.
- Wide choice of tyres. Set of high-speed rims available as an option.
- Front and rear ISOBus connection. The innovative ISOBus Green system guarantees maximum compatibility with all mechanical and hydraulic implements.

GREATER COMFORT FOR INCREASED PRODUCTIVITY

The innovative **REX4** from Landini has become a true worldwide benchmark for specialty row-crop tractors. Supplied in F, GE, GB and GT versions, the **REX4** Plat is available with either ROPS or a high-visibility low-profile cab specially designed for low-clearance applications. The **REX4** Plat is tailored around the operator's specific needs: full-LED lights, spacious flat-deck platform mounted on silent blocks to reduce vibration levels, easy-to-access driving position, optimal steering wheel to seat distance, ergonomic controls. The new **REX4** Plat tractors are powered by Stage V Deutz 2.9-litre, 16-valve, 4-cylinder turbo intercooled engines with common rail injection system and power ratings from 75 to 112 hp. The transmission provides 12 FWD + 12 REV speeds with synchro shuttle and up to 48 FWD + 16 REV speeds with three-stage on-the-go powershift and power shuttle. The open-centre hydraulic system can be equipped with either a dual pump providing 58 + 30 l/min for a total flow of 88 l/min or a triple pump supplying 36 + 58 + 30 l/min for a total flow of 124 l/min. The system supplies up to 94 l/min to the rear hitch and remote valves and provides a flow rate of 54 l/min already at 1500 rpm. Available on request are an electronic rear hitch with a lift capacity of 2700 kg and of up to 3400 kg for the **REX4** GT and a front hitch with a lift capacity of 1400 kg. Designed with a strong focus on operator comfort, the **REX4** really knows how to stand out for its design, versatility and productivity.



STAGE V AFTER-TREATMENT SYSTEM TUCKED UNDER THE BONNET

The new engines meet Stage V emission regulations using DPF, DOC, SCR and AdBlue technologies. The after-treatment package is fitted under the bonnet to keep a compact size for optimum visibility and reduced tractor footprint.



REX 4.0 WITH THE LANDINI FLEET MANAGEMENT

The Landini Fleet Management monitors the activities of your tractor fleet in real time: consumptions, hours of operation, worked surface and remote diagnostics for enhanced productivity. A 3- or 5-year Fleet Management subscription will give subscribers access to the Landini web portal.



SERIE 5 HC

HIGHLIGHTS

- Powerful and efficient FPT F36 engine with up to 102 hp.
- Power Four electrohydraulic transmission with two-speed Hi-Lo Powershift.
- Open-centre hydraulic system with up to 62 l/min dual pump.
- Ground clearance of up to 700 mm.
- Landini Fleet & Remote Diagnostic Management.

THE TRUE HORTICULTURAL SPECIALIST

The **Serie 5 HC** is the untiring specialty tractor for vegetable crops from Landini. Designed for superior comfort and productivity, the **Serie 5 HC** tractor is ideally suited for planting, fertilizing, irrigating and harvesting vegetables, fruits, corn, rice and other crops. Featuring large-diameter equal-sized wheels with narrow tyres, the **Serie 5 HC** achieves a ground clearance of up to 700 mm. This high clearance is useful to protect delicate crops minimising potential contact damage. The tractor also provides minimal soil compaction and with its impressive agility and small turning radius makes manoeuvring at headlands and in tight spaces easier than ever. The narrow tyres are type-approved for road transport. The **Serie 5 HC** tractor is available with two power outputs, 95 hp and 102 hp. Designed to enhance operator comfort, the spacious Total View Slim cab offers a flat floor; a driver's seat with optional air suspension system; a telescopic tilt-adjustable steering column that tilts with the instrument cluster; ergonomically-placed, intuitive controls; automotive-grade fit and finish and roof-integrated air-conditioning to maintain a comfortable working environment all year round.



FPT F36 ENGINES FOR MAXIMUM EFFICIENCY

The **Serie 5 HC** tractors are powered by FPT F36 3.6-litre, 16-valve, 4-cylinder turbo engines with intercooler and common rail injection system that meet the Stage V/Tier 4 Final emissions regulations and deliver 95, and 102 hp. The exhaust after-treatment system is tucked away under the bonnet to ensure full visibility during work.



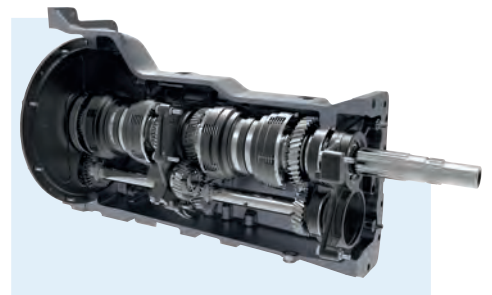
TOTAL VIEW SLIM CAB FOR ALL-ROUND VISIBILITY

The fully-glazed four-post cab provides unobstructed view in every direction, making manoeuvring in tight spaces and at headlands easier and safer. Up to 10 LED work lights ensure optimum visibility during night work.



POWER FOUR ELECTROHYDRAULIC TRANSMISSION

The Power Four Hi-Lo doubles the gears of the main transmission providing 24 FWD and 24 REV speeds. The creeper increases speeds to 32 FWD and 32 REV. The Power Four transmission features a steering-column synchro or power shuttle and a de-clutch button allowing operator to shift through all gears without use of the clutch pedal.



CRAWLER
TRACTORS



CRAWLER TRACT



LANDINI CRAWLER TRACTORS: EFFICIENCY AT FULL SPEED

Unstoppable.

Known worldwide for epitomizing work under extreme conditions, the Landini Trekker4 is always up for a challenge. Designed to provide maximum safety on steep slopes, this crawler tractor delivers superior pulling power for heavy tillage work while reducing soil compaction after ploughing and around orchard trees. Powerful, versatile, productive, comfortable and safe, the Trekker4 crawler tractor is unstoppable.

Capable.

Daring to go where others won't, the Trekker4 amazes with its pulling capacity, tractive force, flotation capability, stability and manoeuvrability. Key features of the Trekker4 crawler tractor include: a responsive engine for safe operation and productivity on sloping and difficult ground conditions, a highly configurable transmission and hydraulic system, remote valves with conveniently-located quick couplers, a sturdy rear hitch, an oil cooler and auxiliary oil tank, rubber tracks for superior traction. Efficient and safe, the Trekker4 is the ideal choice for farmers looking for a tractor that goes beyond the limits.

Comfortable.

The Trekker4 is designed to ensure safe operation on rough terrain, steep slopes and muddy grounds while providing maximum ride comfort. The air-suspension seat offers best comfort on rough grounds, while servo-assisted levers enable smooth steering of the tractor. Ergonomically-arranged controls provide easy and intuitive control of key tractor functions. New iso-mounted cabs with sound-insulation system and climate control protect the operator from dust and vibrations while providing excellent all-round visibility. This enhances operator comfort and reduces fatigue, while improving tractor performance and productivity.



TREKKER4

HIGHLIGHTS

- Steel tracks configurable in width from 310 a 450 mm; rubber track shoes are 400 mm wide.
- Well-proven mechanical transmission, totally designed and manufactured by Landini: 4 speeds and 2 ranges providing a total of 16 FWD + 8 REV gears with overdrive or creeper.
- High-capacity fuel tank: 85 litres for extended run times without refuelling.
- Comfortable air-suspension seat available as an option to isolate operator from vibrations for maximum ride comfort.
- Rear hitch Category 2 with 2600 kg lift capacity; lift capacity can be increased to 3400 kg with two optional assistor rams.





THE HILLSIDE SPECIALIST

The Trekker crawlers from Landini are well known as specialised tractors for extreme conditions. Designed to deliver constant grip and superior traction on sloping terrain, the Trekker crawlers come in two versions: **Trekker4 F** for vineyards and orchards and **Trekker4 M** for hillside use. The design of the bonnet reflects the Landini family styling. The driving position has received a new dashboard with digital instruments and ergonomically optimized controls and an air-suspension seat that reduces vibrations and improves ride comfort. Both models are powered by new Deutz AG 2.9L, 16-valve, 4-cylinder engines with turbocharger and aftercooler that meet the Stage V emission regulations using a diesel oxidation catalyst (DOC) without exhaust gas regeneration. The fuel tank has a capacity of 85 litres. The Landini mechanical transmission offers four speeds and two ranges and can be equipped with overdrive or creeper to provide 16 FWD and 8 REV gears.

The mechanical rear hitch Category 2 has a lift capacity of 2600 kg. The Trekker crawler tractors offer a choice of either fully or semi-lubricated 310, 350 and 400 mm wide tracks. The **M** version is also available with lubricated extra large 450 mm tracks. The **Trekker4** is an unstoppable specialist, capable of ensuring high performance and safety even on the toughest terrain.

HYDRAULIC SYSTEM DESIGNED FOR COMFORT AND EFFICIENCY

The hydraulic system features a dual pump that supplies 41 l/min to the rear hitch and to the three rear remote valves and 28 l/min to the Hi-Drive hydrostatic steering system for maximum driving comfort. Maximum hydraulic pressure to rear remotes is 180 bar.



A DRIVING POSITION DESIGNED FOR COMFORT

The layout of the driving position reveals great attention to details. The large driver's seat can be optionally equipped with air suspension and armrests to provide maximum comfort of operation on the toughest grounds. All controls are ergonomically arranged and the instrument cluster is always clearly visible.



400 MM WIDE RUBBER SHOES

The new rubber tracks with 400 mm wide shoes are ultra strong thanks to the iron core and steel sliders. The rubber coating increases versatility and convenience of use both in the field and on the road.



UTILITY
TRACTORS



UTILITY TRACTORS



UTILITY TRACTORS: STRAIGHT FROM DESIGNERS TO YOUR FIELD

Design.

Every tradition has a beginning. The history of multi-purpose tractors starts with Giovanni Landini over 130 years ago. A true passion of the family, Landini utility tractors are recognised worldwide for their innovative design. Being part of the large Landini community means relying on fully Italian-made sturdy, dependable and unstoppable machines.

Versatility.

Based on the expertise acquired in over 130 years of experience in the field, Landini utility tractors respond to the flexibility needs of modern farm businesses. Designed and built from the scratch around the farmers needs, these tractors ensure uncompromising performance and ultimate versatility. Landini utility tractors are also versatile in their equipment: each tractor is unique and can be configured to suit each farmer's needs in order to ensure maximum efficiency.

Size.

Landini utility tractors are perfect in size. They are not too big, so they work with ease between orchard and vineyard rows and allow simple manoeuvring inside barns and sheds ensuring fast, fatigue-free operation. But at the same time they are not too small for the job, they just provide the traction, grip and stability that are required both in the field and on the road. Capable of handling virtually any job on the farm – including ploughing, harrowing, mowing, haymaking, orchard work, transport and much more besides, the Landini utility tractors are the true all-rounders of modern agriculture.

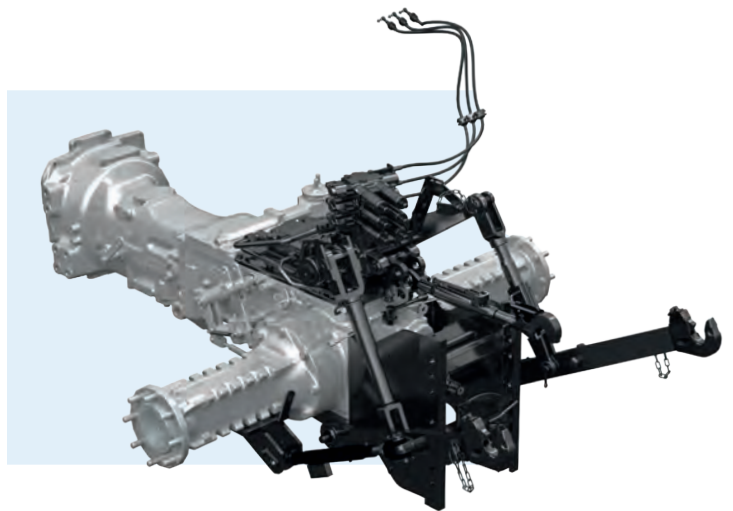


SERIE 4



LANDINI FRONT LOADERS

Designed specifically to fit the **Serie 4** tractor range, the Landini front loaders are easy to mount and remove and allow the use of a wide range of implements. The ergonomic joystick control and the transparent roof hatch further enhance comfort and productivity.



TWO-SPEED PTO

The **Serie 4** features a rear 540/540E PTO with ground speed. A push button enables smooth and modulated engagement of the PTO, ensuring a soft start-up of implement.



HIGHLIGHTS

- Three models delivering 61 hp, 68 hp and 75 hp.
- Speed Four transmission with 24 FWD + 24 REV speeds and mechanical Hi-Lo.
- Power Four transmission with 12 FWD + 12 REV speeds and power shuttle.
- Mounting frame for factory-fit Landini front loader.
- Open-centre hydraulic system with 52 l/min flow rate.
- 540/540E PTO plus ground speed.

THE ALL-ROUND TRACTOR THAT DOES IT ALL

Simple and functional, the new **Serie 4** light utility tractor from Landini is a true all-rounder, capable of handling any job on the farm. Specially designed for operations in wide-row vineyards and orchards as well as for ploughing, tilling and harrowing small plots of land, this tractor is equally perfect for sowing and haymaking. Compact and easy to handle, the **Serie 4** is ideal for use inside barns and stables as well as for safe operation on steep slopes and efficient road transport. The innovative Total View Slim cab is designed according to automotive standards for maximum safety and comfort. Cab key features include: low-profile roof with a transparent hatch for maximum visibility, flat floor and a highly-efficient climate control system. All controls are ergonomically designed for ease of use and allow intuitive control of the 12/12 power shuttle transmission and of the 24/24 synchro shuttle transmission with mechanical Hi-Lo. The three models in the range deliver power ratings of 61 hp, 68 hp and 75 hp. Other key features include a specially-built transmission, 4WD front axle with limited slip differential, 2110 mm wheelbase, mechanical rear hitch with 3000 kg lift capacity, optional front hitch and PTO, hydraulic system with up to 52 l/min flow rate and a urea-free after-treatment system for improved fuel economy and reliability. When you choose Landini, you are choosing a reliable partner offering cutting-edge technology, simplicity and versatility – as per tradition.

ROPS VERSION

The ROPS version of the **Serie 4** features an iso-mounted platform designed to minimise vibrations. Spacious and easy to access, the driving position provides a high level of comfort reducing operator fatigue. All controls are ergonomically arranged and user-friendly. The two-post ROPS folds down to allow the tractor to work under low fruits or vines and between narrow row spacings.



PLAT

**UTILITY
TRACTORS**

UNIQUE / VERSATILE / VALUE FOR MONEY



5-085



HIGHLIGHTS

- FPT F34 3.4L, 75-hp engine providing 375 Nm torque at 1400 rpm, without AdBlue.
- T-Tronic transmission with HML three-stage powershift.
- Front axle with brakes, full locking differential and electro-hydraulically operated four-wheel drive
- Open-centre hydraulic system with dual pump: 56 l/min for remote valves and 32 l/min for steering.
- Rear hitch with 3900 kg lift capacity. Front hitch with 1700 kg lift capacity.
- Up to 34" rear tyres.
- Designed specifically to match the 5-085 model, the sturdy L15 front loader from Landini enhances tractor versatility and productivity.

UNIQUE OF ITS KIND

The Landini **5-085** is a unique utility tractor that surprises with its efficiency, versatility and fuel economy. With its 75 hp, the **5-085** meets the Stage V/Tier4 Final emission regulations without using a urea-based emissions reduction system. This solution not only generates continuous, significant cost savings but also reduces time-consuming checks. This amazing tractor is equipped with a powerful 3.4L engine capable of fully using its 75 hp. Designed to provide outstanding traction, including on tough ground, the engine of the **5-085** delivers up to 56% torque backup, the best in the market. The transmission is available with HML three-stage powershift. The open-centre hydraulic system features a dual pump that delivers 56 l/min to the remote valves and 32 l/min to the steering circuit. The system can be equipped with up to three rear-mounted and two mid-mounted remote valves and with a flow divider that directs the flow from one remote to two separated outlets, allowing operator to control up to six different hydraulic functions. The **5-085** tractor features 34-inch tyres for improved ground clearance and can be equipped with up to 10 LED work lights. Its powerful performance makes the **5-085** ideally suited for soil preparation activities, while its excellent weight-to-power ratio makes it great for transport on steep slopes. Its compact size also makes it perfect for use inside barns and stables. Combining the agility of light, compact tractors with the power of utility tractors, the Landini **5-085** is truly unique of its kind.

FPT F34 ENGINE: HIGH PERFORMANCE AND FUEL ECONOMY

FPT F34 3.4L engine with 375 Nm at 1400 rpm and up to 56% torque backup: it looks as if you have 15 hp more. With its 75 hp, this engine meets the Stage V/Tier4 Final standards without using urea-based after-treatment: tractor running costs reduced.



STURDY AND NIMBLE FRONT AXLE FOR TOTAL RELIABILITY

The rigid front axle of the 5-085 further enhances the tractor's compact size and agility. Sturdy and reliable, this axle ensures maximum stability in the field and on the road. With its high ground clearance and its 55° steering angle, the 5-085 tractor provides excellent manoeuvrability in confined spaces.



T-TRONIC ELECTROHYDRAULIC TRANSMISSION

The T-Tronic transmission with HML powershift provides 36FWD + 12REV speeds. The de-clutch button and the reverse power shuttle allow user to shift through all gears and change from forward to reverse without using the clutch pedal. The shuttle response is electronically adjustable by the operator.





SERIE 5

HIGHLIGHTS

- FPT F36 3.6L engine delivering up to 114 hp.
- Suspended cab with air-suspension seat, ergonomic controls, automotive-grade fit and finish and low-profile roof.
- T-Tronic transmission with three-stage HML Powershift.
- Suspended front axle with brakes, full locking differential and electro-hydraulically operated four-wheel drive.
- Open-centre hydraulic system with 82 l/min pump.
- Electronically-controlled rear hitch with up to 4500 kg lift capacity.
- Front hitch and front PTO for maximum versatility.
- ISObus system and Precision Steering Management.
- Landini Fleet & Remote Diagnostic Management.



FPT F36 ENGINES FOR MAXIMUM EFFICIENCY

The **Serie 5** tractors are powered by FPT F36 3.6-litre, 16-valve, 4-cylinder turbo engines with intercooler and common rail injection system. The three models in the range deliver 95, 102 and 114 hp and meet the Stage V/Tier 4 Final emissions regulations. The exhaust after-treatment system is tucked away under the bonnet to maximise operator visibility during work.



EFFICIENCY TAILORED TO YOUR NEEDS

With a level of performance comparable to higher-class vehicles, the Landini **Serie 5** tractor surprises with its versatility and comfort. Ideally suited to handle field work such as ploughing, tillage and harrowing, this utility tractor is equally perfect for sowing and haymaking, barn and stall maintenance and transport tasks. The **Serie 5** offers a variety of features. The suspended four-post cab ensures all-round visibility and automotive-grade comfort. The cab features a low-profile roof for easy access to low-ceiling barns and a transparent roof hatch for extra visibility during front loader operations. A new, ergonomically-designed joystick provides convenient and precise control of all tractor functions and implements. The FPT 3.6L engine meets Stage V emissions regulations and delivers up to 114 hp. The **Serie 5** tractor offers a T-Tronic transmission with three-stage HML powershift. The hydraulic system is equipped with a pump that provides a flow rate of 82 l/min for efficient operation of all hydraulic functions and up to six remote valves. The **Serie 5** can be optionally equipped with a Landini front loader; a front hitch and front PTO; a satellite-based guidance system for maximum working accuracy; an ISObus system for simple and efficient implement control; a Fleet Management system that monitors your tractor fleet, controls the data of each vehicle and performs remote diagnostics. The **Serie 5** is an ideal work companion that will surprise you with its performance, versatility and comfort.



SUSPENDED CAB AND SUSPENDED FRONT AXLE

The suspended cab and suspended front axle isolate the operator from shocks and vibrations creating a safe and comfortable work environment that reduces operator fatigue and increases productivity. A new, highly-efficient sound insulation system reduces the noise level inside the cab.



LANDINI L20 FRONT LOADER

Specifically developed to fit the **Serie 5** tractor, the Landini L20 front loader further improves the tractor efficiency and productivity. Key features of the L20 front loader include ease of installation and use, smooth operation and ride comfort, lift capacity up to 1800 kg.

OPEN FIELD
TRACTORS



OPEN FIELD TRACT

Landini



LANDINI TRACTORS: EXCELLENCE IN THE OPEN FIELD

Quality.

Quality speaks for itself. Anyone who has tried a Landini tractor at least once knows why. Landini tractors are the result of an expertise that cannot be improvised but is built on the experience of those who have been designing and manufacturing tractors for over 130 years. So when you opt for a Landini open field tractor, you know you are choosing unparalleled quality. Because Landini tractors are excellent by tradition.

Comfort.

For its open field tractors, Landini has developed a really comfortable cab. Inside everything is simple, functional and within easy reach. The interior features a high-quality automotive-grade fit and finish. The instrument cluster and the steering column are electrically adjustable in height and tilt. The driver's seat is fully equipped with comfort features and a highly efficient climate control system maintains the desired cab temperature whatever the outdoor weather conditions. Based on advanced ergonomic studies, all controls are arranged in a logical and intuitive manner for maximum comfort and ease of operation. Choosing an open field tractor from Landini means you will be able to drive your tractor right away, without stress and time wasted. Offering high quality, operating comfort and total reliability, Landini is the ideal partner to boost your productivity.

Simplicity.

Open field tractor technology is becoming increasingly complex. As a result, farmers have to face high employee training costs or rely on agricultural contractors to keep their farms running. Landini knows this and has chosen to take a different route, combining state-of-the-art technology with extreme ease of use. To meet this challenge, Landini has adopted a farmer-centred design approach which allows the user to concentrate on the task at hand instead of staying focused primarily on tractor operation. The Landini open field tractors are designed to be highly configurable and customizable to each farmer's specific requirements. This ensures customers get only what they need, eliminating unnecessary costs.



SERIE 7 SWB

HIGHLIGHTS

- FPT NEF 45 and 67 engines with Stage V HI-eSCR2 emissions control system.
- V-Shift 4-stage continuously variable transmission.
- Robo-Six transmission with 6 PowerShift speeds and 5 robotised ranges.
- CCLS hydraulic system with variable displacement pump delivering up to 160 l/min.
- Mechanical or electro-hydraulic remote valves.
- Mechanical or semi-active cab suspension.
- Front axle with independent suspension.
- Data Screen Manager: 12" touch screen monitor with new functions.
- Landini Fleet & Remote Diagnostic Management.

A CONCENTRATE OF EFFICIENCY

Designed for farmers looking for efficient, easy-to-handle open field tractors, the **Serie 7 SWB** comprises self-supporting four- and six-cylinder engines. The Lounge cab offers a wide range of comfort features: high-quality fit and finish, ergonomic controls, 12" touch screen monitor with new menus, up to 12 LED lights on cab top. The cab is equipped with either a mechanical or semi-active suspension system to reduce vibrations. The independent front axle suspension increases traction for improved safety and comfort. The new bonnet tilts open 90 degrees and the coolers located in front of the radiator open fully from a single latch to allow fast and easy cleaning. The Serie 7 LWB tractors are powered by new Stage V FPT NEF 67 6.7-litre, 24-valve, six-cylinder engines and Stage V FPT NEF 45 4.5-litre, 16-valve, four-cylinder engines. Both engines offer power ratings of up to 175 hp. Wheelbase is 2761 mm on six-cylinder tractors and 2651 mm on four-cylinders. This tractor range comes with a choice of two transmissions: a V-Shift four-stage continuously variable transmission and a Robo-Six transmission with a six-speed on-the-go PowerShift and five speed ranges that provides 30 FWD + 27 REV speeds. The creeper increases the number of speeds to 54 FWD and 27 REV. The tractor is further equipped with a highly efficient four-speed PTO and a front hitch capable of lifting up to 3500 kg. The electronically-controlled rear hitch has a maximum lift capacity of 9300 kg. The CCLS hydraulic system features a pump that provides 160 l/min to operate up to eight remote valves. The **Serie 7 SWB** tractors are prepared for the installation of the satellite guidance system, ISObus system and Landini Fleet & Remote Diagnostic Management to increase efficiency and productivity while reducing operating costs.



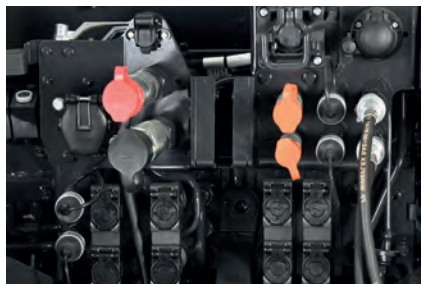
NEW FPT NEF ENGINES ADD MORE VALUE TO YOUR WORK

The **Serie 7 SWB** tractors are powered by new Stage V FPT NEF 45 4.5-litre, 16-valve, four-cylinder engines and Stage V FPT NEF 67 6.7-litre, 24-valve, six-cylinder engines. All engines are turbocharged with intercooler and electronic common rail injection system and have maximum power ratings of 175 hp. The self-supporting engine and the short wheelbase enhance the manoeuvrability and efficiency of the Serie 7 SWB.



MORE HYDRAULIC FUNCTIONS WITH THE FLOW DIVERTER

A flow diverter with six quick-connect fittings is available as an option to control three different hydraulic functions through a flow selector using a single remote valve: with five remotes and one flow diverter you control up to seven different hydraulic functions.



LANDINI L50 FRONT LOADER

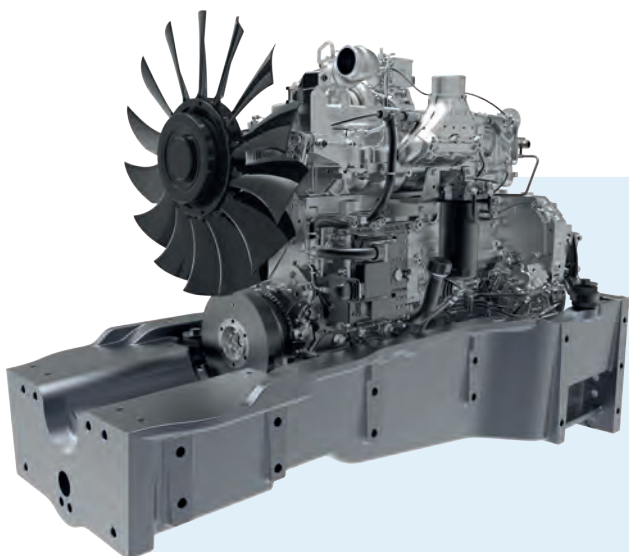
Controlled by an electronic joystick, the sturdy Landini L50 front loader provides smooth operation. The L50 is the perfect fit for your Serie 7 SWB tractor. Together they create an unbeatable combination that will boost your efficiency and productivity.





HIGHLIGHTS

- FPT NEF 67 engine located within a rugged chassis for enhanced performance.
- HI-eSCR2 emissions control system meeting Stage V emission regulations.
- Best in Class system: 1000 hour maintenance intervals to save on time and costs.
- Coolers open out to allow easier and faster cleaning.
- V-Shift 4-stage continuously variable transmission.
- Robo-Six transmission with 6 PowerShift speeds and 5 robotised ranges.
- Closed-centre hydraulic system with up to 160 l/min variable displacement pump.
- Lounge Cab with 4-post design and semi-active suspension system.
- Front axle with independent suspension.
- Two trim levels: Active, with mechanical remote valves; Dynamic, with multifunction armrest and electrohydraulic remotes.
- DSM Data Screen Manager: 12" touch screen monitor with new functions.
- ISObus & PSM Precision Steering Management.
- Landini Fleet & Remote Diagnostic Management.



NEW FPT NEF ENGINES: PLENTY OF POWER FOR OUTSTANDING TRACTION

The Serie 7 LWB tractor range is powered by FPT NEF 6.7L, 24-valve, six-cylinder turbo engines with common rail injection system that deliver up to 240 hp and meet Stage V emission regulations. The engines are located within a rugged chassis with shock absorbing rubber mounts which helps reduce noise and vibration levels and transfers all the power to the ground maximising traction.



A GREAT TRADITION OF EFFICIENCY

Specially designed for open field work, the **Serie 7** LWB tractor range leads the market for efficiency, performance, flexibility and comfort. The Lounge cab offers a wide range of comfort features: excellent all-round visibility, high-grade fit and finish, efficient sound insulation, ventilated air suspension seat, adjustable steering wheel and instrument panel, multifunction controller, 12" touch screen monitor with new functions, transparent roof hatch and automatic climate control. A cab semi-active suspension system is also available to enhance ride comfort. The suspended front axle further reduces vibrations induced by uneven terrain. The **Serie 7** LWB tractor is powered by FPT NEF 6.7L engines with power ratings of up to 240 hp. Engines are located within a rugged chassis with shock absorbing rubber mounts which helps reduce noise and vibration levels within the cab and transfers all the power to the ground, thereby improving performance. All engines utilize HI-eSCR2 after-treatment system to meet Stage V emissions regulations. The **Serie 7** LWB tractors come with a choice of two transmission: a V-Shift four-stage continuously variable transmission with four planetary gear trains and a Robo-Six transmission with five ranges and a six-speed on-the-go PowerShift providing 30 FWD + 15 REV speeds. A creep speed option increases speeds up to 54 FWD and 27 REV. The closed-centre hydraulic system features a 160 l/min high-flow pump which ensures efficient implement operation. With the **Serie 7** LWB tractors, Landini stands out as a reliable partner capable of offering unmatched performance, productivity and comfort.



NEW FARMING TECHNOLOGIES

The name Landini stands for Passion for Innovation. The Serie 7 LWB offers many state-of-the-art features: new 12" touch screen monitor with new functions, ISOBus system for communicating with tractor and implements, PSM system for precision, satellite-based guidance, Fleet Management for real-time fleet monitoring.



V-SHIFT AND ROBO-SIX TRANSMISSIONS

The V-Shift four-stage continuously variable transmission delivers responsive performance, making work easier and safer. The Robo-Six transmission with six PowerShift speeds and five ranges offers 30 FWD and 15 REV speeds and up to 54 FWD and 27 REV speeds with creper for high performance, smooth driving and fuel economy.

VERSATILITY
EFFICIENCY
STURDINESS



LANDINI TRACTORS AND FRONT LOADERS: THE PERFECT MATCH

Entirely Italian-made, the new Landini front loaders are designed to enhance the performance, flexibility and durability of your tractor. The five front loader series from Landini fit the entire tractor range, from the Mistral2 to the Serie 7, ensuring maximum versatility of use in farming, forestry and municipal applications. To ensure optimum performance in all working conditions, the Landini front loaders have been designed with utmost attention to every detail: excellent levelling accuracy for reduced operator stress and fatigue; greater lift capacity; higher reach; push-pull adaptor or Faster multi-coupler; brackets designed to provide even weight distribution across the entire tractor, thereby reducing the load on the front axle; Blue Icon high-quality paint designed to withstand severe weather conditions and hard wear and tear; careful packing and shipping to avoid loader damage.

Built with versatility in mind, the Landini front loaders are offered with a wide range of implements for a variety of handling, transport and maintenance tasks including light-material buckets, earth buckets, multi-material buckets, manure forks, round bale forks and pallet forks. Our front loaders are a perfect match for your Landini tractor. Together they create an unbeatable combination that will boost your efficiency and productivity.

HIGHLIGHTS

1. Ergonomically-designed joystick for control of following functions: boom raise/lower, bucket load/unload, 3rd and 4th function, transmission.
2. Crop protection: the loader frame does not reduce tractor ground clearance.
3. The front loader does not reduce the tractor turning radius.
4. The front loader suspension with two nitrogen-charged accumulators for smooth operation.
5. Rigid hydraulic lines reduce oil overheating and simplify maintenance.
6. All Landini tractor cabs feature a transparent, high-visibility roof hatch for unobstructed view of front loader at all times.
7. The front loader can also be installed and used in conjunction with a front-mounted hitch.
8. A Euro implement carrier allows a wide range of compatible implements to be fitted to Landini front loaders.
9. A bucket level gauge allows operator to determine the angle of implement to the ground.
10. High lift capacity: loader frame constructed from Domex steel or HLE steel.

1 GENIUS SUSPENSION SYSTEM

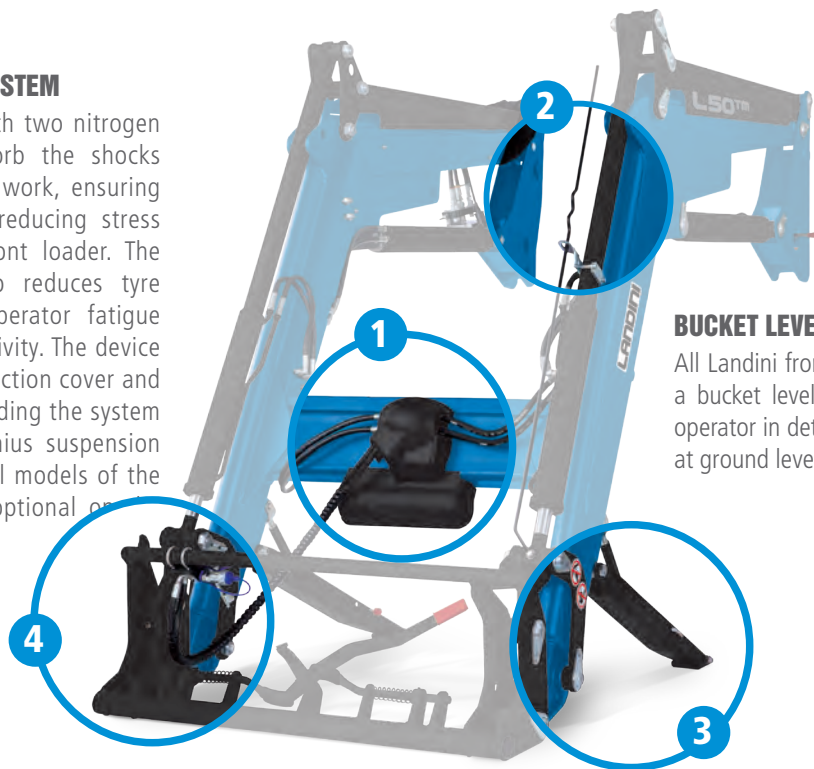
A suspension system with two nitrogen accumulators help absorb the shocks produced during loader work, ensuring smooth operation and reducing stress on both tractor and front loader. The Genius suspension also reduces tyre wear and minimizes operator fatigue while increasing productivity. The device is equipped with a protection cover and a shutoff valve for overriding the system when required. The Genius suspension system is standard on all models of the Lt and Lp ranges and optional on other ranges.

4 3RD FUNCTION AND 3RD + 4TH FUNCTION

These options are required when the front-end loader operates implements equipped with hydraulic functions. The third function is required to operate implements like buckets, forks with grapple, grab forks and side-shift forks. The third and fourth function is required for more complex implements such as round bale forks with extra lift and side-shift function.

FLOATING 4TH POSITION

This device is mounted on the hydraulic block to power the front loader cylinders. The floating 4th position is recommended when using implements that follow the ground contour.



2 BUCKET LEVEL INDICATOR

All Landini front loaders are equipped with a bucket level indicator which assists the operator in determining the bucket position at ground level during handling operations.

3 PARKING STANDS

The Landini front-end loaders feature long parking stands with adjustable cross braces ensuring maximum stability on uneven or sloping ground. During loader work, the parking stands are stored inside the boom to ensure that they do not interfere with the tractor wheels.

EASY MAINTENANCE

The brackets of the Landini front loaders are designed to allow ease of access to all tractor service points, making routine maintenance tasks simple and time-saving.

TECHNICAL DATA

MISTRAL 2		MISTRAL 2-055 STD	MISTRAL 2-060 STD	MISTRAL 2-055 GE	MISTRAL 2-060 GE
ENGINE PERFORMANCE					
Engine manufacturer		Kohler			
Engine type		KDI 1903 TCR			
Max power (ISO)	HP/kW	49 / 36	57 / 42	49 / 36	57 / 42
Max torque	Nm	180	200	180	200
Max torque engine speed	rpm	1200			
Displacement	cm ³	1900			
Cylinders / Valves		3 TA / 12			
Emissions category		Stage V			
After treatment system		EGR + DOC + DPF			
Engine Memo Switch		●			
TRANSMISSION					
Transmission type		Mechanical			
No. of gears FW+RW		● 12+12 ○ 16+16 w/creeper			
Reverse shuttle		Synchro shuttle			
Traction type		4WD			
REAR PTO					
Rear PTO speeds	rpm	● 540/540E groundspeed PTO			
HYDRAULIC SYSTEM					
Hydraulic flow rate services+steering	l/min	35+20			
Rear spool valves		● 2 std ○ 2 std + 1 flot			
REAR HYDRAULIC HITCH					
Rear hydraulic hitch type		Mechanical with position and draft control			
Rear hitch max capacity at the hitches	kg	1200			
FRONT HYDRAULIC HITCH					
Front hitch max capacity at the hitches	kg	400			
FRONT PTO					
Front PTO speeds	rpm	○ 1000			
CAB AND DRIVING POSITION					
Cab type		○ 4 posts FOPS structure w/openable front window		-	
Cab air conditioning		○ Manual A/C		-	
Digital dashboard		●			
WEIGHT AND DIMENSIONS					
Wheelbase	mm	1790		1770	
Min-max height over hood	mm	1230 - 1305		1131 - 1206	
Min-max length w/front weights	mm	3168 - 3504		3168 - 3504	
Min rear tires - Index radius IR	mm	320/70R20 - 475		320/70R20 - 475	
Shipping weight	kg	1600 / 1780		1580	

Key: ● standard ○ option * aftermarket

REX 3

		REX3-070 F-GE	REX3-080 F-GE
ENGINE PERFORMANCE			
Max power (ISO)	CV/kW	68 / 50	75 / 55
Rated engine speed	rpm	2200	
Max torque	Nm	315	
Max torque engine speed	rpm	1500	
Displacement	cm ³	2500	
Cylinders / Valves		4 TA / 16	
Emissions category		Stage V	
After treatment system		EGR + DOC + DPF	
Fuel tank capacity	l	50	
TRANSMISSION			
No. of gears FW+RW		● 12+12 / ○ 16+16 w/creeper	
40km/h engine speed	rpm	● 2200	
Traction type		Electro-hydraulic 4WD	
Front differential lock		● Hydralock	
REAR PTO			
Rear PTO speeds	rpm	● 540 - ○ 540-540E / 540-1000 / groundspeed PTO	
HYDRAULIC SYSTEM			
Hydraulic flow rate services+steering	l/min	● 50+30 ○ 60+30	
Rear spool valves		● 1 - ○ 2 / 3	
Rear hitch category - Hitch type		Cat.2 w/quick hooks	
Rear hitch max capacity at the hitches	kg	● 2200 ○ 2700 w/heavy-duty hitch and ELS	
CAB AND DRIVING POSITION			
Cab type		○ Low-profile 6 posts cab w/central tunnel (F-GE) ○ High visibility 4 posts structural cab	
Platform type		● ROPS w/central 265mm height tunnel	
WEIGHT AND DIMENSIONS			
Wheelbase	mm	1950	
Height over ROPS to rear axle center	mm	1965	
Height over cab roof to rear axle center	mm	1500 (LP Cab) / 1660 (STD Cab Cat.2) / 1695 (STD Cab Cat.4)	
Height over hood to rear axle center	mm	755	
Min-max lenght w/front weights	mm	3652	
Min-max overall width	mm	1335-1710	
Shipping weight	kg	2200 (Plat) / 2500 (LP Cab) / 2500 (STD Cab)	
Front and ventral implements support		○ Front / ventral implements ready frame	

Key: ● standard ○ option * aftermarket

TECHNICAL DATA

REX 4 CAB

REX4-080
F-S-V-GT

REX4-090
F-S-V-GT

REX4-100
F-S-V-GT

REX4-110
F-S-V-GT

REX4-120
F-S-V-GT

ENGINE PERFORMANCE		Deutz AG				
Engine manufacturer		Deutz AG				
Engine type		TCD 2.9 L4 HT		TCD 2.9 L4 HP		
Rated power (ISO)	hp/kW	75 / 56	78 / 58	85 / 63	95 / 70	104 / 77
Max power (ISO)	hp/kW	75 / 56	90 / 66	95 / 70	102 / 75	112 / 82
Max torque	Nm	375	378	400	410	420
Displacement	cm ³	2900				
Cylinders / Valves		4 TA / 8				
Emissions category		Stage V / Tier IV				
After treatment system		DOC+DPF		DOC+DPF+SCR		
TRANSMISSION		● Speed Four ○ Speed Four (HiLo) / Power Four (HiLo) / T-Tronic (HML) / Robo-Shift (HML)				
Transmission type		● 12+12 ○ 16+16 creeper / 24+24 Hi-Lo / 32+32 Hi-Lo+creeper / 36+12 HML / 48+16 HML+creeper				
No. of gears FW+RW						
40km/h ECO engine speed	rpm	●				
Transmission control		● Manual (Speed Four / Power Four / T-Tronic) ○ Multifunction joystick (Robo-Shift)				
Front axle type		● Rigid ○ Suspended (F-S-GT)				
Traction type		100% electro-hydraulic 4WD				
REAR PTO		● Servoassisted clutch ○ Electro-hydraulic multidisc clutch (w/RPS)				
Rear PTO type						
Rear PTO speeds	rpm	● 540-540E ○ 540-1000 / 540-540E-1000-1000E / groundspeed PTO				
HYDRAULIC SYSTEM		● 58+30 ○ 36+58+30 (94 available for services)				
Hydraulic flow rate services+steering	l/min					
Rear spool valves		● 2 ○ 1 + 1 h.m. / 2 + 1 k.o. / 2 + 1 hydr.mot. / 2 + 1 hydr.mot. + 1 e.h. / 4 e.h.				
Mid mounted spool valves		○ 1 e.h. / 3 e.h.				
Front quick couplings		○ 2 + 1 free flow return / 4 + 2 free flow return / 6 + 1 or 2 free flow return / 8 + 2 free flow return				
REAR HYDRAULIC HITCH		● Mechanical with position/draft/intermix control ○ Electronic with position/draft/intermix control				
Rear hydraulic hitch type						
Rear hitch max capacity at the hitches	kg	● 2700 ○ 3400 (GT w/additional cylinders)				
FRONT HYDRAULIC HITCH		○ Electro-hydraulic				
Front hitch type						
Front hitch max capacity at the hitches	kg	1400 (F-S-GT) / 1100 (V)				
FRONT PTO		○ Electro-hydraulic multidisc with engage modulation				
Front PTO type						
CAB AND DRIVING POSITION		High visibility 4 posts monolithic structure w/flat floor w/openable front/rear windows				
Cab type						
Cab suspension		● Suspended on hydro-silentblocks ○ Mechanical suspension				
Cab air filter - Filtration category		● Dust filter - Cat.2 ○ Active carbon filter - Cat.4				
WEIGHT AND DIMENSIONS		2140 (F-S-GT) / 2190 (V)				
Wheelbase	mm					
Height over cab roof to rear axle center	mm	1930				
Shipping weight	kg	3000				

Key: ● standard ○ option * aftermarket

REX 4 PLAT

REX4-080
F-GE-GB-GT

REX4-090
F-GE-GB-GT

REX4-100
F-GE-GB-GT

REX4-110
F-GE-GB-GT

REX4-120
F-GE-GB-GT

ENGINE PERFORMANCE		Deutz AG				
Engine manufacturer		Deutz AG				
Engine type		TCD 2.9 L4 HT		TCD 2.9 L4 HP		
Rated power (ISO)	hp/kW	75 / 56	78 / 58	85 / 63	95 / 70	104 / 77
Max power (ISO)	hp/kW	75 / 56	90 / 66	95 / 70	102 / 75	112 / 82
Max torque	Nm	375	378	400	410	420
Displacement	cm ³	2900				
Cylinders / Valves		4 TA / 8				
Emissions category		Stage V / Tier IV				
After treatment system		DOC+DPF		DOC+DPF+SCR		
TRANSMISSION						
Transmission type		● Speed Four ○ Speed Four (HiLo) / Power Four (HiLo) / T-Tronic (HML)				
No. of gears FW+RW		● 12+12 ○ 16+16 creeper / 24+24 Hi-Lo / 32+32 Hi-Lo+creeper / 36+12 HML / 48+16 HML+creeper				
40km/h ECO engine speed	rpm	●				
Transmission control		● Manual (Speed Four / Power Four / T-Tronic)				
Front axle type		● Rigid ○ Suspended (F-GT)				
Traction type		100% electro-hydraulic 4WD				
REAR PTO						
Rear PTO type		● Servoassisted clutch ○ Electro-hydraulic multidisc clutch (w/RPS)				
Rear PTO speeds	rpm	● 540-540E ○ 540-1000 / 540-540E-1000-1000E / groundspeed PTO				
HYDRAULIC SYSTEM						
Hydraulic flow rate services+steering	l/min	● 58+30 ○ 36+58+30 (94 available for services)				
Rear spool valves		● 2 ○ 1 + 1 h.m. / 2 + 1 k.o. / 2 + 1 hydr.mot. / 2 + 1 hydr.mot. + 1 e.h.				
Mid mounted spool valves		○ 1 e.h. / 3 e.h.				
Front quick couplings		○ 2 + 1 free flow return / 4 + 1 free flow return				
REAR HYDRAULIC HITCH						
Rear hydraulic hitch type		● Mechanical with position/draft/intermix control ○ Electronic with position/draft/intermix control				
Rear hitch max capacity at the hitches	kg	● 2700 ○ 3400 (GT w/additional cylinders)				
FRONT HYDRAULIC HITCH						
Front hitch type		○ Electro-hydraulic (F-GT)				
Front hitch max capacity at the hitches	kg	1400				
FRONT PTO						
Front PTO type		○ Electro-hydraulic multidisc with engage modulation				
CAB AND DRIVING POSITION						
Platform type		● ROPS w/central 228mm height tunnel				
Platform suspension		Suspended on silentblocks				
WEIGHT AND DIMENSIONS						
Wheelbase	mm	2140				
Height over ROPS to rear axle center	mm	1710				
Shipping weight	mm	2800				

Key: ● standard ○ option * aftermarket

TECHNICAL DATA

SERIE 5 HC		SERIE 5-100 HC	SERIE 5-110 HC
ENGINE PERFORMANCE			
Max power (97/68 CE - ISO TR 14396)	hp / kW	95.2/70	102/75
Max torque Engine speed at 1400 rpm	Nm	395	430
Manufacturer		FPT	
No. of Cyls / Displacements / Valves		4 / 3.6 l / 16	
TRANSMISSION			
No. of gears - std		○ 12 FW + 12 RW with synchro shuttle	
No. of gears - opt 2		○ 24 FW + 24 RW with Powershift Hi-Lo	
REAR PTO			
Speeds	giri/min	● 540 - ○ 540 / 540E ○ 540 / 1000	
FRONT AXLE			
Front rigid axle		●	
HYDRAULIC SYSTEM			
Hydraulic pump for services (rear hitch&spool valves) + steering - flow rate		● 62 + 32 l/min	
REAR 3-POINT HITCH			
Max lifting capacity at the hitches	kg	○ 3900 with 2 additional rear lift cylinders	
CAB			
Total view slim on silent block		●	
MISCELLANEOUS			
Landini Fleet M Landini Fleet Management - ready		●	
WEIGHT AND DIMENSIONS			
Wheelbase	mm	2355	
Standard weight measured with average spec's	kg	4300 (4WD)	
Gross vehicle weight	kg	6000	

Key: ● standard ○ option * aftermarket

TREKKER4

TREKKER4-085 F

TREKKER4-085 M

ENGINE PERFORMANCE			
Engine manufacturer		Deutz-Fahr	
Engine type		TCD 2.9 L4	
Max power (ISO)	hp/kW	75 / 56	
Max torque	Nm	375	
Displacement	cm ³	2900	
Cylinders / Valves		4 TA / 8	
Emissions category		Stage V / Tier IV	
Fuel tank capacity	l	85	
TRANSMISSION			
Transmission type		Speed Four	
No. of gears FW+RW		● 16+8 Hi-Lo Overdrive - ○ 16+8 w/creeper	
REAR PTO			
Rear PTO type		Servoassisted clutch	
Rear PTO speeds	giri/min	● 540/540E - ○ 540/1000	
STEERING AND BRAKING SYSTEM			
Steering system		Hydrostatic Hi-Drive	
Steering control		2 levers operating 2 independent wet clutches and brakes	
Braking system		Hydrostatic wet multidisc graphite brakes	
HYDRAULIC SYSTEM			
Hydraulic flow rate services+steering	l/min	41 + 28	
Rear spool valves		3 (2 std + 1 float)	
REAR HYDRAULIC HITCH			
Rear hydraulic hitch type		Mechanical with position/draft/intermix/floating control	
Rear hitch max capacity at the hitches	kg	● 2650 - ○ 3400 (w/additional cylinders)	
CAB AND DRIVING POSITION			
Platform type	kg	ROPS w/central tunnel w/side gears and reverse shuttle commands	
Platform suspension		Suspended on silentblocks w/air suspended seat	
Digital dashboard		●	
WEIGHT AND DIMENSIONS			
Min-max overall width	mm	1410 - 1540	
Shipping weight	kg	3750-3900	
TRACKS			
Track frame rollers		5	
Track shoe type		● Metallic - ○ Rubber	
Track shoe width	mm	310 - 360 - 400	360 - 400 - 450

Key: ● standard ○ option * aftermarket

TECHNICAL DATA

SERIE 4

		SERIE 4-060	SERIE 4-070	SERIE 4-080
ENGINE PERFORMANCE				
Max power (97/68 CE - ISO TR 14396)	hp / kW	61 / 45	68 / 50	75 / 55
Max torque at 1400 rpm - Stage V (Tier 4 Final)	Nm	285 (279)	310 (299)	310 (299)
Torque backup - Stage V (Tier 4 Final)		46% (43%)	43% (38%)	30% (25%)
Manufacturer		KOHLER		
Cylinders / Displacement / Valves		4 / 2.5 l / 16		
Maintenance Interval		1000 hours		
TRANSMISSION				
No. of gears - std		● 24FWD + 24REV with synchro shuttle		
No. of gears - option 1		○ 12FWD + 12REV with RPS		
REAR PTO				
Speeds	rpm	● 540/540E		
FRONT AXLE				
Front rigid axle		●		
HYDRAULIC SYSTEM				
Hydraulic pump for rear hitch & remote valves + steering - flow rate		● 52 + 30 l/min		
REAR 3-POINT HITCH				
Max lifting capacity at hitch points	kg	● 3000		
FRONT 3-POINT HITCH				
Front hitch		●		
FRONT PTO				
Type - Speed		●		
CAB				
Total View Slim cab mounted on silent blocks		●		
Platform Version		○		
MISCELLANEOUS				
Landini Fleet Management - ready		●		
WEIGHTS AND DIMENSIONS				
Wheelbase	mm	2110		
Standard weight measured with average specs	kg	3200		
Gross vehicle weight	kg	5100		

Key: ● standard ○ option * aftermarket

5-085

		5-085
ENGINE PERFORMANCE		
Max power (97/68 CE - ISO TR 14396)	hp/kW	75 / 56
Max torque at 1400 rpm	rpm	375
Torque backup	Nm	56%
Manufacturer		FPT
Cylinders / Displacement / Valves		4 / 3.4 l / 8 V
TRANSMISSION		
No. of gears - std		● 12FWD + 12REV with synchro shuttle / ○ RPS with modulation control
No. of gears - option 1		○ 24FWD + 24REV with RPS with modulation control & Hi-Lo
No. of gears - option 2		○ 36FWD + 12REV with RPS with modulation control & HML
REAR PTO		
Speeds	rpm	● 540/540E - ○ 540/1000 - ○ 540/540E/1000/1000E - ○ 540
FRONT AXLE		
Front rigid axle		●
Front differential lock		● limited slip - ○ Hydralock 100% diff lock
HYDRAULIC SYSTEM		
Hydraulic pump for rear hitch & remote valves + steering - flow rate		● 56 + 30 l/min
REAR 3-POINT HITCH		
Max lifting capacity at hitch points	kg	● 3900
FRONT 3-POINT HITCH		
Max lifting capacity at hitch points	kg	1600
FRONT PTO		
Type		○ - electrohydraulic multidisc clutch with modulated engagement
CAB		
Total View Slim cab mounted on silent blocks		●
MISCELLANEOUS		
Landini Fleet Management - ready		●
WEIGHTS AND DIMENSIONS		
Wheelbase	mm	2171
Standard weight measured with average specs	kg	3700
Gross vehicle weight	kg	5800

SERIE 5

		SERIE 5-100	SERIE 5-110	SERIE 5-120
ENGINE PERFORMANCE				
Max power (97/68 CE - ISO TR 14396)	hp / kW	95.2/70	102/75	114/84
Max torque Engine speed at 1400 rpm	Nm	395	430	460
Manufacturer		FPT		
No. of Cyls / Displacements / Valves		4 / 3.6 l / 16		
TRANSMISSION				
No. of gears - std		● 12 FW + 12 RW with synchro shuttle (ACTIVE) ● 12 FW + 12 RW RPS with modulation control (DYNAMIC)		
No. of gears - opt 2		○ 24 FW + 24 RW with Powershift Hi-Lo (ACTIVE) ○ 36 FW + 12 RW with T-Tronic HML&RPS (DYNAMIC)		
REAR PTO				
Speeds	giri/min	● 540 - ○ 540 / 540E - ○ 540 / 1000 (ACTIVE) - ● 540 / 540E - ○ 540 / 1000 ○ 540 / 540E / 1000 / 1000E con HML (DYNAMIC)		
FRONT AXLES				
Front rigid axle		● ACTIVE-DYNAMIC		
Front suspended axle		○ DYNAMIC		
HYDRAULIC SYSTEM				
Hydraulic pump for services (rear hitch&spool valves) + steering - flow rate		● 62 + 32 l/min (ACTIVE-DYNAMIC) - ○ 82 + 32 l/min (DYNAMIC)		
REAR 3-POINT HITCH				
Max lifting capacity at the hitches	kg	○ 4500 (ACTIVE) - ● 4500 (DYNAMIC) with 2 additional rear lift cylinders		
FRONT 3-POINT HITCH				
Max lifting capacity at the hitches	kg	2200		
FRONT PTO				
Tipo - velocità		○ electro-hydraulic multidisc with modulation - 1000		
CAB				
Landini mechanical Cab suspension		○ DYNAMIC		
MISCELLANEOUS				
PSM Precision Steering Management & ISObus - ready		●		
PSM Precision Steering Management & ISObus - full kit EGNOS		○ - with Topcon steering wheel & X25 8,4" touchscreen and AGI-5 antenna		
Landini Fleet Management - ready		●		
WEIGHT AND DIMENSIONS				
Wheelbase	mm	2355		
Standard weight measured with average spec's	kg	4000		
Gross vehicle weight	kg	7000		

Key: ● standard ○ option * aftermarket

TECHNICAL DATA

SERIE 7 SWB ROBO-SIX		SERIE 7-165	SERIE 7-175	SERIE 7-170	SERIE 7-180
ENGINE PERFORMANCE					
Max power (97/68 CE - ISO TR 14396)	hp / kW	155.3/114.2	166.3/122.3	155.3/114.2	166.3/122.3
Max power with EPM (97/68 CE - ISO TR 14396)	hp / kW	165.2/121.5	175.4/129.0	165.2/121.5	175.4/129.0
Max torque without EPM, (with EPM) - Engine speed at 1400 rpm	Nm	651.9 (675.6)	700.0 (700.0)	651.9 (675.6)	700.0 (700.0)
Manufacturer		FPT			
Engine type - Installation type		NEF 45 - Structural engine		NEF 67 - Structural engine	
Exhaust post-treatment Stage V / Tier 4 Final		HI-eSCR2			
No. of Cyls / Displacements / Valves		4 / 4.5 litres / 16		6 / 6.7 litres / 24	
CAPACITIES					
Fuel tank	l	280			
TRANSMISSION					
Type		Robo-Six - 6 powershift and 5 robotized ranges			
No. of gears		● - 30 AV + 15 RM without creeper - ○ 54 AV + 27 RM with creeper			
REAR PTO					
Speeds		540 / 540 E / 1000 / 1000 E			
FRONT AND REAR AXLES					
Front suspended axle		○ - IFS with independent front wheels suspension system			
HYDRAULIC SYSTEM					
Hydraulic piston pump with CCLS Closed Center Load Sensing system - flow rate		● - 123 l/min			
Hydraulic piston pump with CCLS Closed Center Load Sensing system - flow rate ultraflow		○ - 160 l/min			
Rear spool valves type, flow rate, min - max		● - 3 mechanical spool valves, 80 l/min ○ - 2M, 3M + 2E, electronic spool valves, 100 l/min 3E, 4E, 5E, 3E+2E, 4E+2E			
REAR 3-POINT HITCH					
Max lifting capacity at the hitches	kg	● - 6400 - ○ 9300			
FRONT 3-POINT HITCH					
Max lifting capacity at 610 mm	kg	3500			
FRONT PTO					
Type		○ - electro-hydraulic multidisc with engage modulation			
Speeds		1000			
CAB					
Landini mechanical suspension		○ - mechanical cab suspension system			
Landini semi-active suspension		○ - electro-hydraulic semi-active cab suspension system electronically controlled			
EasyPilot with multi-functions arm rest		○ - with electro-hydraulic spool valves			
DSM Data Screen Manager		○ - (with electro-hydraulic spool valves) - 12" monitor touchscreen			
MISCELLANEOUS					
Rear ISOBus		○			
PSM Precision Steering Management, rear ISOBus & EazySteer - full kit EGNOS		○			
PSM Precision Steering Management, rear ISOBus & EazySteer - full kit RTK NTRIP		○			
Landini Fleet Management - ready		●			
WEIGHT AND DIMENSIONS					
Wheelbase	mm	2651		2760	
Shipping weight - measured with average spec's	kg	6400		6700	
Gross vehicle weight	kg	11500			

Key: ● standard ○ option * aftermarket

SERIE 7 SWB V-SHIFT

SERIE 7-175

SERIE 7-180

ENGINE PERFORMANCE			
Max power (97/68 CE - ISO TR 14396)	hp / kW	166.3/122.3	166.3/122.3
Max power with EPM (97/68 CE - ISO TR 14396)	hp / kW	175.4/129.0	175.4/129.0
Max torque without EPM, (with EPM) - Engine speed at 1400 rpm	Nm	700.0 (700.0)	700.0 (700.0)
Manufacturer		FPT	
Engine type - Installation type		NEF 45 - Structural engine	NEF 67 - Structural engine
Exhaust post-treatment Stage V / Tier 4 Final		HI-eSCR2	
No. of Cyls / Displacements / Valves		4 / 4.5 litres / 16	6 / 6.7 litres / 24
CAPACITIES			
Fuel tank	l	280	
TRANSMISSION			
Type		V-Shift - continuous variable transmission	
No. of stages		4	
REAR PTO			
Speeds		540 / 540 E / 1000 / 1000 E	
FRONT AXLE			
Front suspended axle		○ - IFS with independent front wheels suspension system	
HYDRAULIC SYSTEM			
Hydraulic piston pump with CCLS Closed Center Load Sensing system - flow rate		● - 123 l/min	
Hydraulic piston pump with CCLS Closed Center Load Sensing system - flow rate ultraflow		○ - 160 l/min	
Rear spool valves type, flow rate, min - max		● - 3 electrohydraulics spool valves - ○ - 4E, 5E, 3E+2E, 4E+2E	
REAR 3-POINT HITCH			
Max lifting capacity at the hitches	kg	● - 6400 - ○ 9300	
FRONT 3-POINT HITCH			
Max lifting capacity at 610 mm	kg	3500	
FRONT PTO			
Type		○ electro-hydraulic multidisc with engage modulation	
Speeds		1000	
CAB			
Landini mechanical suspension		○- mechanical cab suspension system	
Landini semi-active suspension		○ - electro-hydraulic semi-active cab suspension system electronically controlled	
EasyPilot with multi-functions arm rest		●	
DSM Data Screen Manager		○ - 12" monitor touchscreen	
MISCELLANEOUS			
Rear ISOBus		○	
PSM Precision Steering Management, rear ISOBus & EazySteer - full kit EGNOS		○	
PSM Precision Steering Management, rear ISOBus & EazySteer - full kit RTK NTRIP		○	
Landini Fleet Management - ready		●	
WEIGHT AND DIMENSIONS			
Wheelbase	mm	2651	2760
Shipping weight - measured with average spec's	kg	6400	6700
Gross vehicle weight	kg	11500	

Key: ● standard ○ option * aftermarket

TECHNICAL DATA

SERIE 7 LWB ROBO-SIX		SERIE 7-200	SERIE 7-210	SERIE 7-230
ENGINE PERFORMANCE				
Max power (97/68 CE - ISO TR 14396)	hp / kW	180 / 132	200 / 147	215 / 158
Max power with EPM (97/68 CE - ISO TR 14396)	hp / kW	190 / 140	210 / 155	225 / 166
Max torque without EPM, (with EPM) - Engine speed at 1400 rpm	Nm	756 (778)	840 (860)	904 (921)
Manufacturer		FPT		
Engine type - Installation type		NEF 67 - ISO-mounted engine on cast iron chassis		
Exhaust post-treatment Stage V / Tier 4 Final		HI-eSCR2		
No. of Cyls / Displacements / Valves		6 / 6.7 litres / 24		
CAPACITIES				
Fuel tank	l	320		
TRANSMISSION				
Type		Robo-Six - 6 powershift and 5 robotized ranges		
No. of gears		● - 30 AV + 15 RM without creeper - ○ 54 AV + 27 RM with creeper		
REAR PTO				
Speeds		540 / 540 E / 1000 / 1000 E		
FRONT AND REAR AXLES				
Front suspended axle		○ - IFS with independent front wheels suspension system		
HYDRAULIC SYSTEM				
Hydraulic piston pump with CCLS Closed Center Load Sensing system - flow rate		● - 123 l/min		
Hydraulic piston pump with CCLS Closed Center Load Sensing system - flow rate ultraflow		○ - 160 l/min		
Rear spool valves type, flow rate, min - max		mechanicals, flow rate 80 l/min, 2 - 3 mechanicals + 1 electro-hydraulic (ACTIVE version) electro-hydraulics, flow rate 100 l/min, 3 - 6 (DYNAMIC version)		
REAR 3-POINT HITCH				
Max lifting capacity at the hitches	kg	● - 6400 ○ - 9300 (ACTIVE version) - ○ 9300 (DYNAMIC version)		
FRONT 3-POINT HITCH				
Max lifting capacity at 610 mm	kg	3500		
FRONT PTO				
Type		○ - electro-hydraulic multidisc with engage modulation		
Speeds		1000		
CAB				
Landini mechanical suspension		○ - mechanical cab suspension system		
Landini semi-active suspension		○ - electro-hydraulic semi-active cab suspension system electronically controlled		
EasyPilot on RH consolle		● (ACTIVE version)		
EasyPilot with multi-functions arm rest		● (DYNAMIC version)		
DSM Data Screen Manager		○ - (DYNAMIC version) - 12" touchscreen monitor		
MISCELLANEOUS				
Rear ISOBus		○		
PSM Precision Steering Management, rear ISOBus & EazySteer - full kit EGNOS		○		
PSM Precision Steering Management, rear ISOBus & EazySteer - full kit RTK NTRIP		○		
Landini Fleet Management - ready		●		
WEIGHT AND DIMENSIONS				
Wheelbase	mm	2651		
Shipping weight - measured with average spec's	kg	8000		
Gross vehicle weight	kg	13000		

Key: ● standard ○ option * aftermarket

SERIE 7 LWB V-SHIFT

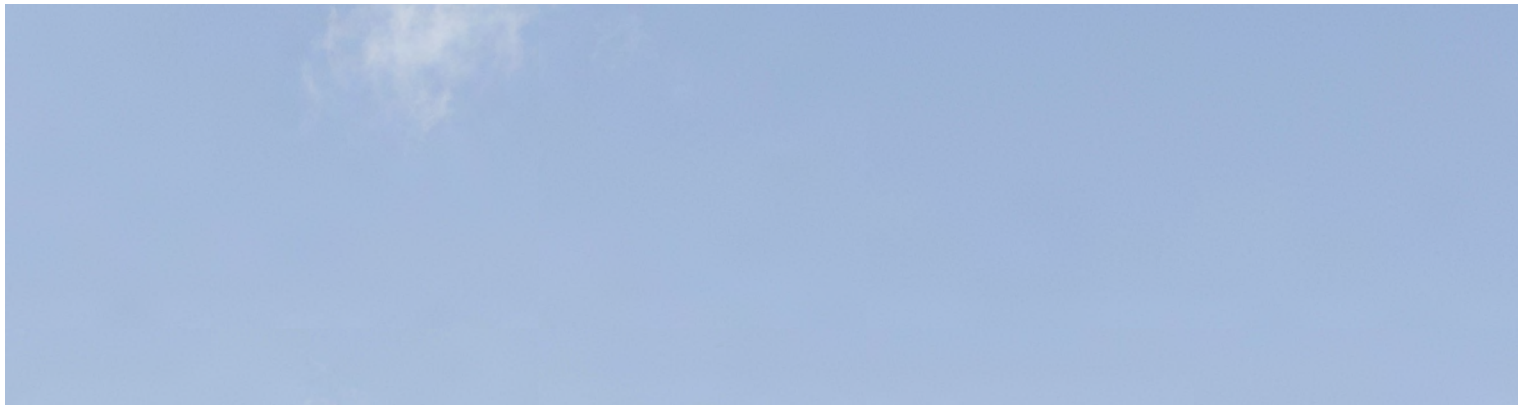
SERIE 7-210

SERIE 7-230

SERIE 7-240

ENGINE PERFORMANCE		SERIE 7-210	SERIE 7-230	SERIE 7-240
Max power (97/68 CE - ISO TR 14396)	hp / kW	200 / 147	215 / 158	230 / 169
Max power with EPM (97/68 CE - ISO TR 14396)	hp / kW	210 / 155	225 / 166	240 / 176
Max torque without EPM, (with EPM) - Engine speed at 1400 rpm	Nm	840 (860)	904 (921)	966 (983)
Manufacturer		FPT		
Engine type - Installation type		NEF 67 - ISO-mounted engine on cast iron chassis		
Exhaust post-treatment Stage V / Tier 4 Final		HI-eSCR2		
No. of Cyls / Displacements / Valves		6 / 6.7 litres / 24		
CAPACITIES				
Fuel tank	l	350		
TRANSMISSION				
Type		V-Shift - continuous variable transmission		
No. of stages		4		
REAR PTO				
Speeds		540 / 540 E / 1000 / 1000 E		
FRONT AND REAR AXLES				
Front suspended axle		○ - IFS with independent front wheels suspension system		
HYDRAULIC SYSTEM				
Hydraulic piston pump with CCLS Closed Center Load Sensing system - flow rate		● - 123 l/min		
Hydraulic piston pump with CCLS Closed Center Load Sensing system - flow rate ultraflow		○ - 160 l/min		
Rear spool valves type, flow rate, min - max		electro-hydraulics, flow rate 100 l/min, 3 - 6		
REAR 3-POINT HITCH				
Max lifting capacity at the hitches	kg	9300		
FRONT 3-POINT HITCH				
Max lifting capacity at 610 mm	kg	3500		
FRONT PTO				
Type		○ - electro-hydraulic multidisc with engage modulation		
Speeds		1000		
CAB				
Lounge Cab - 4 post cab with Landini mechanical suspension		●		
Landini semi-active suspension		○ - electro-hydraulic semi-active cab suspension system electronically controlled		
EasyPilot with multi-functions arm rest		●		
DSM Data Screen Manager		● - 12" touchscreen monitor		
MISCELLANEOUS				
Rear ISObus		○		
PSM Precision Steering Management, rear ISObus & EazySteer - full kit EGNOS		○		
PSM Precision Steering Management, rear ISObus & EazySteer - full kit RTK NTRIP		○		
Landini Fleet Management - 3 years of full plan subscription		●		
WEIGHT AND DIMENSIONS				
Wheelbase	mm	2820		
Shipping weight - measured with average spec's	kg	8300		
Gross vehicle weight	kg	13000		

Key: ● standard ○ option * aftermarket



Landini®

Passion for Innovation.

